



The Alford American Family Association

Serving the Alford community over 25 Years
We Are Family!!

Mary Katherine “Kay” Kirkland Alford

AAFA #0011s

Founding Member

September 3, 1919 – February 14, 1993

Obituary

Kay's obituary appeared in at least three papers. In addition to the one we are printing here, a similar one was in *The Brunswick (GA) News* on Feb. 16, and a smaller death notice appeared in *The Washington Post* on Feb. 17.

SEA ISLAND, Ga. - Katherine K. Alford, 73, of Sea Island died Sunday, Feb. 14, 1993, at Southeast Georgia Regional Medical Center in Brunswick, Ga. She was the wife of Lodwick H. Alford of Sea Island.

Born in Baconton, Mitchell County, Ga., Sept 3, 1919, she was the daughter of John Gordon and Caroline Elizabeth Stalvey Kirkland.

Mrs. Alford had lived in Newport from 1947 to 1948 and again from 1957 to 1961. She attended schools in Sylvester, Worth County, Ga.; received a bachelor of science degree in home economics from Georgia State College for Women in Milledgeville, Ga., and studied at American University and Georgetown University in Washington, D.C., and the Juilliard School of Music in New York. She also received her master's degree in religious education at the Wesley Theological Seminary in Washington, D.C.

She held several positions including the director of Christian education at the First United Methodist Church in Hyattsville, Md., director of the nursery school at Bethesda United Methodist Church, a home economics teacher in the public high school in Moultrie, Ga., and at Swinburne School in Newport, and the manager of a retail department for Montgomery Ward & Co.

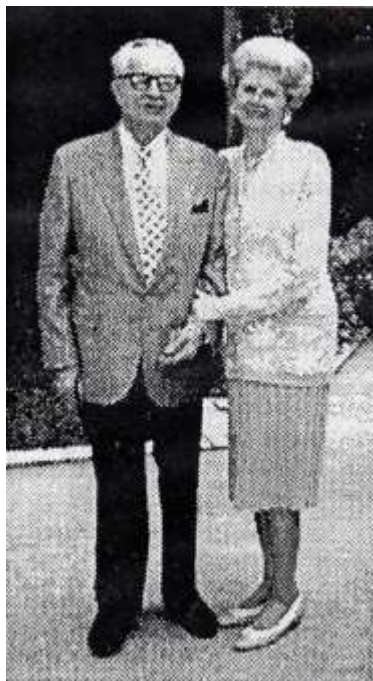
Mrs. Alford was a lifelong church school teacher and counselor, and taught traditional and Japanese flower arranging. She was a professional church soloist for more than 30 years, and did vocal solo and choral work with the Swanhurst Chorus of Newport and the Mozart Society of Glynn County, Ga.

She was a certified lay speaker of United Methodist Church and was a Sunday morning speaker at several churches in the Washington, D.C., area. She was a past president of United Church Women and the Naval Officers Wives Club in Newport, and was a member of St. Simons United Methodist Church, United Methodist Women, the Mozart Society of Glynn County, the Daughters of the American Revolution, and the Alford American Family Association and Civil War Roundtable of Coastal Georgia.

Besides her husband, she leaves a son, L. Kirkland Alford of Jacksonville, Fla.; a daughter, Andrea E. Fantacci of Zachary, La.; two sisters, Elizabeth K. Jones of Lompoc, Calif., and Sara K. Jackson of Stuart, Fla.; four grandchildren, two nieces and three nephews.

Her funeral took place today, Feb. 17, 1993, in St. Simons United Methodist Church, St. Simons Island, Ga. Burial will be Friday, Feb. 19, 1993, at 3 p.m. in Arlington National Cemetery, Arlington, Va. Donations may be made to Glynn County, Ga., 406 Whitfield Ave., St. Simons Island, Ga, 31522. Arrangements are by the Edo Miller & Sons, Inc. Funeral Home, 1107 Gloucester St, Brunswick, Ga.

Published in The Newport Daily News, Newport, RI on Wed., 17 Feb 1993.



Wick and Kay Alford, Easter, 1992

Kay was the wife of Lodwick "Wick" Alford, one of the founding directors of the association and its first president (1987-1991). She was never able to attend a meeting but much of the success of the association can be attributed to her supporting Wick in the early days of the association. She and Wick were inducted into the AAFA Hall of Fame at the 1993 St. Francisville, LA meeting.

We are very saddened to learn that Katherine Kirkland "Kay" Alford, wife of AAFA Chairman of the Board Lodwick Alford, died this past Valentine's Day after a long illness, with nearly all her family at her side in the hospital. She was buried in a lovely spot in Arlington National Cemetery overlooking the city of Washington, D.C.

Note from Gil Alford, Executive Director:

"On Valentine's Day I received a phone call from Capt. Lodwick H. "Wick" Alford. He called to inform me that he had lost his dear wife, Kay. Wick, as many of you know was one of the founders of AAFA, one of the three members of the original board of directors,



Katherine Kirkland Alford, circa 1970

our first president, and is currently the Chairman of the Board of Directors. We never had the good fortune to meet Kay personally but knowing Wick and one of her daughters we can easily imagine the great lady she was. She was suffering from a serious blood disease long before Wick and I became friends, which was several years before the Association was formed. Kay was never well enough to make it to any of the meetings with Wick, but she never prevented his attendance - he has attended each one. I was lucky enough to talk briefly to Kay on the phone on a few occasions and could tell from them that she was a gracious and informed person who loved her family very much and was most supportive of what Wick

had undertaken. We will miss her by virtue of the support she gave Wick. Of course, he has lost the person to whom he had been wed for 53 years. Two children, a son and a daughter, are members of AAFA, Andrea Alford Fantacci (who some of us know as the AAFA t-shirt lady) and Kirk Alford. Several her sisters-in-law, brothers-in-law, and cousins are also members. Our heartfelt sympathies go out to these folks."

Personal Data

Birth 3 Sep 1919
 Baconton, Mitchell County, Georgia, USA
 Death 14 Feb 1993 (aged 73)
 Sea Island, Glynn County, Georgia, USA
 Burial Arlington National Cemetery
 Arlington, Arlington County, VA, USA
 Plot Section 8, Site 10110
 Relation: Wife Of Veteran
 Memorial ID 76297983



Inscription: BELOVED WIFE "*Little Darling*"
 Photo added by: [Paul Hays](#)

Family Members

- Parents
 John Gorden Kirkland, 1887-unknown
 Carolyn Elizabeth "Bessie" Stalvey, 1890-1974
- Spouse
 Lodwick Houston "Wick" Alford, 1914-2007 (m. 1940)
- Siblings
 Francis Elizabeth Kirkland Jones, 1911-unknown
 Martha Lvette Kirkland, 1916-1921
 Sara M Kirkland Jackson, 1923-2001
- Children
 L. Kirkland Alford
 Andrea E. Fantacci

Information copied from the [Find-A-Grave](#) and [Ancestry.com](#) web page.