

AAFA ACTION

The Official Publication of the Alford American Family Association

December 1989

Vol. II, No. 3



Contents

President's Precept	1
Treasurer's Report	2
The Second Annual Meeting of AAFA	3
Alfords in the News	12
Meeting Minutes & Tapes Available	12
Booklist Additions	13
Part Five: <i>Alford Family Notes</i>	23
International Genealogical Index	25
Alabama Alfords in the IGI	26
Reports from the States	28
Computer Fund Established	30
Success Strikes Again!	31
Membership Report	32
Inquiries	33
Staci Alford: Star Athlete	33
Non-Alford Surname Exchange	34
New Member Lineages	35
Ancestral Family Graph	46
Welcome New Members	47

President's Precept

NOW HEAR THIS!

The second Annual Meeting of our Alford American Family Association held in Houston, Texas, on October 14, 1989, was a wonderful occasion. By almost any standard you can mention, it was a great success. Those of you who were there will know what I mean.

On Friday evening before the meeting an informal get-together served to break the ice—and did it ever! With about 125 people there, the decibel level at the party was a good indication of the spirit and camaraderie engendered.

Arrangements for the meeting at the famous Houstonian Hotel where President Bush has his official home of record were superb. And we all owe D.L. Alford and his cohorts a vote of thanks for the set-up and their Texas hospitality. Thank you again, guys and gals.

Topics discussed and decisions made at the meeting appear elsewhere in this newsletter. The future looks bright for our Association. Membership is growing steadily as news about us gets around by print in genealogy columns and, most importantly, by word of mouth. But as gratified as we are about increased membership, never forget folks, the name of this game is family research and sharing the information uncovered with other members.

Let me again urge all of you not to let organizational and administrative details of our Association divert you from digging into the murky areas of your ancestry. Don't hesitate to look in places unlikely to have Alford information. Just recently on a hunch I was looking through a couple of county histories some distance from my home county and quite unexpectedly found some information about my line of Alfords I had not known before. [Editor's note: Did you copy the pages and send them to the Librarian?!]

If anyone has any doubts that curiosity about our forbears is the glue that holds us together, let me tell you about the last session at our meeting in Houston. At this session, our superb Executive Assistant

(Continued on p. 12)

AAFA Officers

Alford American Family Association
P.O. Box 1586
Florissant, MO 63031-1586

DIRECTORS

D. L. Alford, Jr. Gilbert K. Alford, Jr.
Julius M. Alford Lodwick H. Alford
Pamela Alford Thompson

PRESIDENT

Capt. Lodwick H. Alford, USN Ret.
P. O. Box 742, Sea Island, GA 31561

VICE-PRESIDENT

Ambassador Weston Adams
303 Saluda Ave., Columbia, SC 29205

SECRETARY

Nancy T. Alford
509 E. 7th St., West Point, GA 31833

TREASURER

Julius M. Alford
P. O. Box 489, McComb, MS 39648

GENEALOGIST

William A. Mitchiner, CGRS
501 E. Whitaker Mill Rd. #405C
Raleigh, NC 27608

LIBRARIAN

Nancy Alford Dietrich
P. O. Box 1838, Westport, WA 98595

PUBLICATIONS EDITOR

Pamela Alford Thompson
1017 Marilyn Dr.
Mountain View, CA 94040

EXECUTIVE DIRECTOR

Gilbert K. Alford, Jr.
1403 Kingsford Dr.,
Florissant, MO 63031

The Alford American Family Association is a Missouri corporation which has been exempt from federal income tax by the Internal Revenue Service as provided by Internal Revenue Code 501 (c7). The Association has no paid staff or employees and depends entirely on volunteer workers.

Treasurer's Report

	1988 Actual	1989 Budget Original	1989 Budget Revision (8-30-89)	1989 Actual to Date (11-30-89)	1990 Tentative Budget
REVENUE					
REG FEE (INITIAL)	\$ 700.00	\$1200.00	\$1380.00	\$1530.00	\$1150.00
INITIAL DUES	560.00	750.00	1104.00	1224.00	3450.00
RENEWAL DUES	320.00	784.00	800.00	704.00	3450.00
DONATIONS - GENERAL	682.57	1000.00	1326.00	1401.64	1500.00
BUDGETED REVENUE	\$2267.57	\$3734.00	\$4610.00	\$4859.64	\$9550.00
REG FEE (MEETING)				357.00	
DONATIONS - MEETING				1324.00	
DONATIONS - COMPUTER FUND				235.00	
TOTAL REVENUE	\$2267.57	\$3734.00	\$4610.00	\$6775.64	
EXPENSES					
POSTAGE & PO BOX	\$ 653.97	\$1439.00	\$1900.00	\$1786.46	\$3650.00
STATIONERY	817.01	0.00	250.00	204.67	500.00
PRINTING	337.84	1510.00	1660.00	1769.97	3300.00
RESEARCH		340.00	200.00	143.93	400.00
FAMILY EMBLEM	200.00				
MISCELLANEOUS	241.37	445.00	600.00	737.44	300.00
ADVERTISING					300.00
SUPPLIES					700.00
NON EXPENDABLE ITEMS					400.00
BUDGETED EXP'S	\$2250.19	\$3734.00	\$4610.00	\$4642.47	\$9550.00
MEETING & RECEPTION				1499.94	
TOTAL EXPENSES	\$2250.19	\$3734.00	\$4610.00	\$6142.41	
NET WORTH	\$1399.26			\$2032.49	

Note that the above is as of the end of November and is not the complete report for 1989. The December activity will make a significant difference. Funds received and expensed for the annual meeting are shown outside the budget in the above table. The total cost of the meeting was paid for by fees and donations of those participating in the meeting. The cost was \$181.06 less than the funds received, so the balance was placed in the general fund.

In view of the significantly increasing budget it seems wise to break out some of the miscellaneous expenses for 1990. The net worth of \$2032.49 at the end of November is comprised of the \$1399.26 reserve that was brought forward from 1988 plus the 1989 receipts that have not been expended. It is expected to be substantially less at the end of December.

The tentative 1990 budget is under review by the Board of Directors and is expected to undergo considerable change before execution begins. Members who desire a complete financial report may obtain one by sending \$2.00 to the Missouri office to cover the cost of making copies and mailing.

The Second Annual Meeting of AAFA



Landon Alford of Henderson, Texas; Captain Lodwick Alford, AAFA President; and Gil Alford, AAFA Executive Assistant

The 1989 Annual Meeting of the Alford American Family Association was a huge success! Over 120 people attended the reception on Friday evening, October 13, as well as the meeting on Saturday, October 14. The facilities provided at the Houstonian Hotel and Conference Center were outstanding. Everyone agreed that the meeting was a major AAFA and Alford family event.

Members came from California, Washington, Arizona, Colorado, Oklahoma, Florida, Georgia, Mississippi, Louisiana, Missouri and of course, Texas. One member reported that she had cancelled a trip to South Africa just so she could attend the meeting. From all indications she was not disappointed!

On Friday evening members met many Alford's and other cousins whom they had never seen before—some they'd never even heard of before. The reception began early and continued for several hours. A cash bar was provided and our Texas hosts and a few other members made donations to cover the cost of the outstanding food arrangements.

Those from Texas who contributed were D. L. Alford, Jr., Dovie Jean Alford, Harold Alford, James P. Alford, J. Posie Alford, Landon Alford, Robert A. Alford, Jr., Mrs. W. B. (Lucille) Mehrkam, Bryant J. Alford, Pat Fite, Robert B. Coyner, Hollis W. Alford, Betty Alford Davis, Bess Rayford and Kenneth M. Alford. Others making contributions for the meeting were Captain Lodwick H. Alford, Joe B. Alford, Jean H. Brown, and Ella Alford. The entire membership of AAFA, and especially the members in attendance, thank these generous and hospitable Alford's!



Catherine (Mrs. D.L.) Alford of Caldwell, Texas, Head Hostess (seated); Dovie Alford of Houston, Hostess; and James P. Alford of Houston



Some props from Lee Alford III's ranch to give the reception a western flavor!



Margaret Alford of Brookhaven, Mississippi, and Norman Alford of Houston were guests of cousins Liz Alford Williams of Greenville, Mississippi, and Julius M. Alford, AAFA Treasurer, of McComb, Mississippi.



Mr. and Mrs. Joe B. Alford of Colorado Springs, Colorado—Joe is the AAFA Colorado State Representative.



Katherine Black made several crocheted Alford panels and donated them to the Association. D. L. Alford made these available to members in return for a \$50 donation. It is hoped that some of these crocheted items will be available at the next meeting.

Background music played during the reception was martial music written by British bandmaster Kenneth J. Alford and other noted Alford band musicians. (An article on Kenneth Alford appeared in the March 1989 issue of *AAFA ACTION*.)

H. Harold Alford of Longwood, Florida; his son Victor Alford; J. Posey Alford (back to camera), AAFA Texas Publicist; Sally (Mrs. Richard) Stoewer, AAFA Louisiana Representative; and Richard Stoewer of Baton Rouge, Louisiana.

On Saturday D.L. Alford, Jr., later to become a member of the Board of Directors and AAFA Vice-President for Texas, welcomed members and introduced Gil Alford, who presented President Captain Lodwick H. Alford an AAFA gavel and a plaque recognizing his distinguished service as president of AAFA from its beginning to date.

The Reverend Douglas Lee Alford of Fort Worth, TX, gave the invocation.



Shirley (Mrs. Douglas) Early Alford and Reverend Douglas Lee Alford of Hurst, Texas, Gil Alford (standing), Arliene (Mrs. Hollis) Ferguson Alford and Hollis W. Alford (Doug's brother) of Hemphill, TX

Enjoying the Friday Night Reception



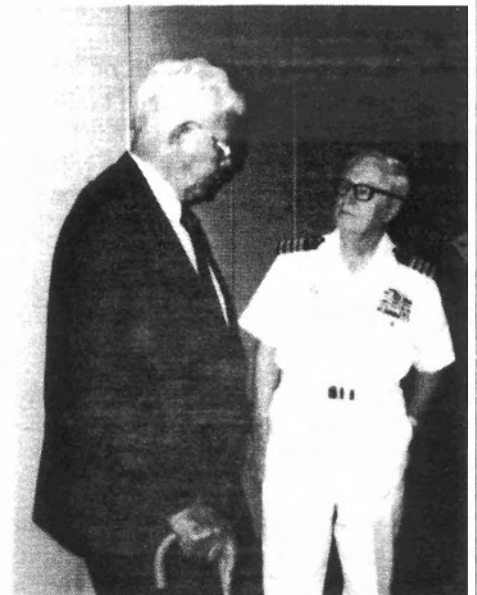
Walter M. Mischer of Houston; James Posey Alford, AAFA Texas Publicist, of Gonzales, Texas; Mary (Mrs. Walter) Alford Mischer; and Joe Alford, son of James and Kathryn Alford, one of several children and grandchildren who attended the Friday night reception.



Lillian (Mrs. Paul C.) Murphy of Baytown, Texas, and in back Pat Fite of Houston, Texas Secretary



Katherine Black of Houston; Lucille Mehrkam of Houston, Texas Genealogist; and Lodwick Alford, AAFA President



Paul C. Murphy of Baytown, Texas, and Lodwick Alford

Captain Alford recognized those who were present at this meeting who also attended the 1988 meeting in Atlanta and expressed his appreciation to our Atlanta hosts, Mr. & Mrs. Milton (Roberta Alford) Folds, who had last minute problems that precluded their presence in Houston. He recognized Nancy Alford Dietrich, AAFA Librarian, who had come the greatest distance—from Westport, Washington. Miss Dovie Jean Alford, who made the initial arrangements with the *Houstonian*, was recognized as the member living nearest to our meeting. The youngest person present was the infant daughter of Roy and Susan Alford. At the meeting Roy took over the management of Alford cemetery data. The most senior member present was Vesta Alford Giddings of Baytown, Texas (born in Louisiana). The member present with the lowest membership number (had been member longer than anyone else there) was Landon Alford—Member #2—of Henderson, Rusk County, Texas. The member present with the highest membership number (had been member less time than anyone else there) was Landon's sister, Ella Alford—Member #246—from Missouri.



James Posey Alford of Gonzales, Texas, AAFA Texas Publicist; Lodwick Alford; Pat Fite of Houston, AAFA Texas Secretary, who did a terrific job of getting the news about our meeting published in many newspapers and genealogical columns; Gil Alford; and Dovie Alford of Houston

Julius Alford made his report on the treasury and pointed out that donations were needed from the membership if our financial status was to remain healthy. A notable contribution to the meeting was an effort Julius shared with his cousin, Elizabeth Alford Williams. They had T-shirts and aprons stenciled with "1989—The Alfords Get Together," for sale. These went like hotcakes, with AAFA receiving a commission on their sales.



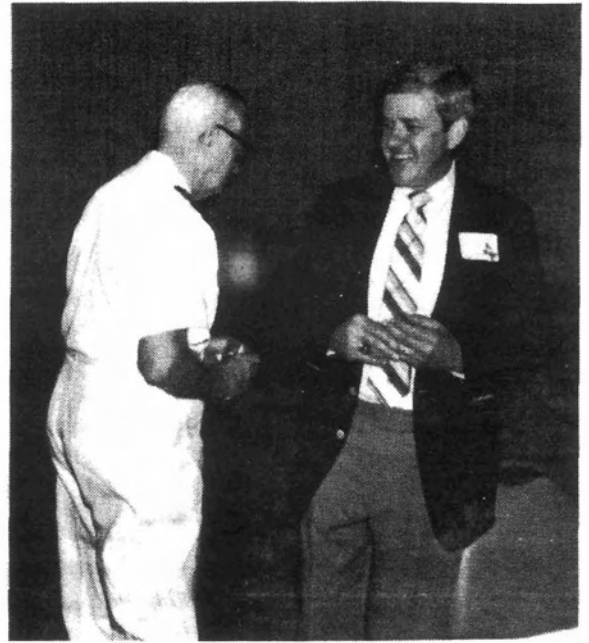
Margie (Mrs. Gerald) Alford from Burseson, Texas; Louise Alford from Houston, Texas; Victor Alford and his father H. Harold Alford from Longwood, Florida; and Jim Alford, son of D.L. Alford

AAFA librarian, Nancy Alford Dietrich, talked about a book in the AAFA library, *THE COWBOY*, by Fred Gibson. It is a true story about the life of a Texas cowboy, Eddie "Fats" Alford of Texas. The Reverend Douglas Alford agreed to read the book and write a review for the newsletter. Others who'd like to borrow the book should contact Nancy in Washington. Nancy also asks that all members send copies of their old photographs to the library, identifying the subjects, to assist in the Association's objective to preserve Alford history.

It was agreed that efforts will be made to obtain pins with the Association emblem. Members will be advised when these are available—for a very modest price.

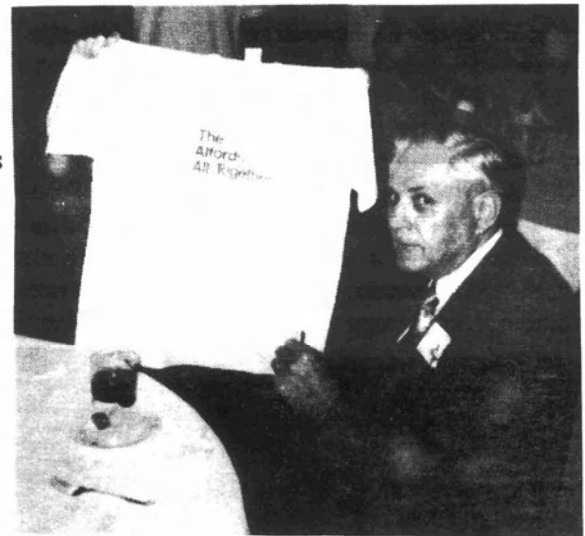


Ella L. Alford, the attendee who was an AAFA member for the shortest time—Member #246, and her brother Landon Alford, the attendee who's been a member the longest—Member #2!



President Lodwick Alford and Kenneth M. Alford of Arlington, Texas

State officers are being designated for many of the states. As quickly as possible each of them is being provided a state notebook. When there are several state officers, as is the case of Texas, the notebook goes to the state genealogist. Lucille Mehrkam had the "Texas book" at the meeting, and it seemed to be one of the more popular items there. At future meetings we hope to have many state books present.



Gil and Mary (behind the shirt) Alford—The T-shirt, a big hit, was produced by Julius Alford and Liz Alford Williams.



Lee Alford IV of Dallas, his arm around his grandmother, Catherine (Mrs. D.L.) Alford; James J. Alford (back left), his wife Kathryn, and their sons Joe and Drew, all of Caldwell, TX; Lee Alford III (back right), his wife Mary, and D.L. Alford Jr., father of James J. and Lee III, all of Caldwell



*Mary (Mrs. Robert L. Jr.) Gilbertson Alford, seated;
Robert A. Alford Jr., and Robert L. Alford, Jr.,
all of Houston*

D. L. Alford, Jr. discussed the painting in the rotunda of the Texas State Capitol. The painting shows the surrender of Santa Ana to Sam Houston. Prominent in the painting is General George G. Alford, who was Sam Houston's Quartermaster General.

After a meeting of the Board of Directors and considerable discussion it was announced that the annual dues beginning January 1, 1990, will be raised to \$15, and the initial registration fee will be dropped to \$5. The increase in revenue is necessary to cover the cost of operations, not the least of which is the publication and mailing of this newsletter.



*James P. Alford of Houston and Mr. and
Mrs. D.L. Alford, Jr.*



*Gerald Alford and his cousin Harold
Alford, both of Texas*



*Jim Alford of Houston, Posey Alford of Gonzales, Texas, Dr.
Chester Brown of Tucson, Arizona, and Robert A. Alford, Jr.,
of Houston, all enjoying some of that great Texas hospitality!*



Paul and Christie Alford Baldwin from Oklahoma City, Oklahoma



Lee Alford IV, Catherine Alford, and seated, George Marie (Mrs. Joe B.) Alford



Mary and Gil Alford of Florissant, Missouri

More Members of the Alford Clan



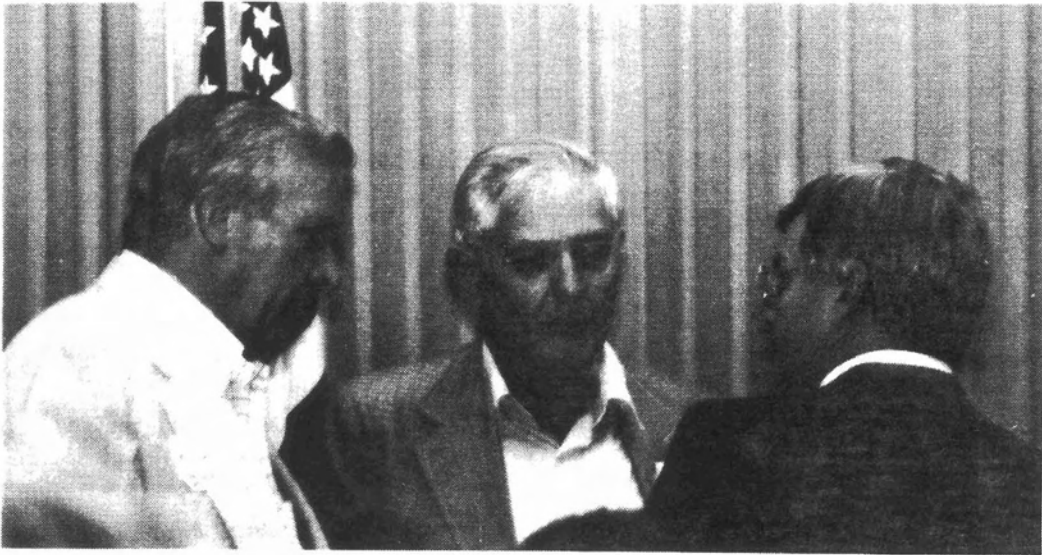
Kate (Mrs. Steve) Alford, Betty Alford Davis from Texas, and Judge Steve A. Alford, Jr., from Louisiana



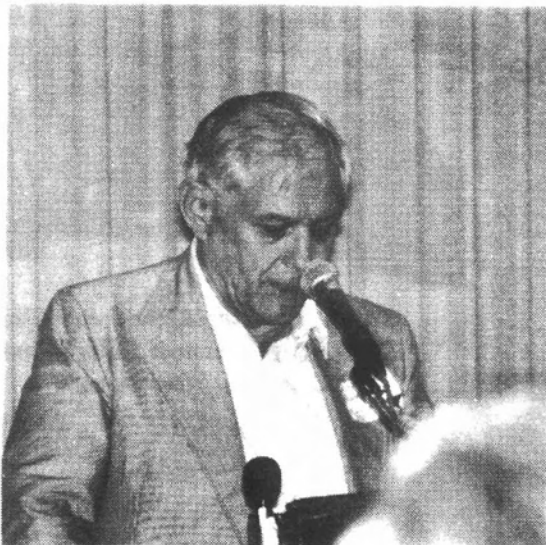
Lodwick Alford, Mary Alford, and her husband Lee Alford III



Phyllis (Mrs. Landon) Alford with Bryant J. Alford and his wife Mary Louise of Jacksonville, Texas



Julius Alford, AAFA Treasurer; Gil Alford, Executive Assistant; and Robert L. Alford, Jr., of Houston



Gil Alford at the podium, leading the very popular Alford Family Forum during the afternoon of the meeting.



Lodwick Alford with Miss Maxine Alcorn, the manager of Houston's Clayton Library and the guest speaker at the meeting.



D.L. Alford, Jr., of Caldwell, TX, the Head Host of the Annual Meeting, V.P. for Texas, and newly elected member of the Board of Directors

Saturday, October 14: The Business Meeting

Due primarily to the lack of members willing to serve as general officers, the 1989 officers agreed to serve another year. Several of them are hopeful that some of you will offer to give them some relief after this next year.

In the past members have received new membership cards each year as they renewed membership. It was agreed at the meeting that new cards each year are not necessary. Effective January 1, 1990, cards issued will not contain an expiration date and members will continue to use the card as long as they maintain their membership. It was announced previously that the mailing of invoices or receipts would be discontinued and that members should use cancelled checks for receipts. All invoicing or receipting will continue in the computer, without printouts, and a listing of all receipts is furnished to the president and treasurer each month. Specific questions from members concerning their payments will be handled on a case by case basis from the Missouri address.

It was agreed that the 1990 meeting will be in Raleigh, North Carolina. It was hoped that a specific date would be known in time to announce in this newsletter but that is not the case. It will undoubtedly be the first half of October. There are three major colleges in the Raleigh area, and we are told there is no way to miss a football weekend. The North Carolina state fair is also held in the Raleigh area in October. It is expected to be in mid-October, which suggests to us that the first half of the month is most likely for our meeting. The Raleigh Convention and Tourist Bureau is working on arrangements for us, and it is hoped that the next newsletter will not only provide the date but also the facility. At the meeting members decided that the 1991 meeting will be in Mississippi, probably the Jackson area, and in 1992 in Northern Florida, probably Tallahassee or Jacksonville.

Miss Maxine Alcorn, Manager of the Houston Public Library's Clayton Library Center for Genelological Research, was our guest speaker. She talked on some of the resources available at the library and how they might be used. Her presentation is included in the video tapes of the meeting that members can order.

Gil Alford conducted "The Alford Family Forum," which was a general discussion of the Alford lineages of the members. He used a handout on which the Alford lineage of all members had been charted. There were 24 pages of these charts with some index and explanation. Most of those present agreed that their work with the charts was the highlight of the meeting.

At the close of the meeting the Texas Alford's presented Gil Alford with a silver bowl in appreciation for the work he did in helping start AAFA. Captain Lodwick H. Alford presented him with a letter of appreciation which extended him



Lodwick Alford, President, reading the Letter of Appreciation to Gil Alford, Executive Assistant

lifetime membership. Gil accepted these in behalf of the membership, without which he acknowledged that he could do nothing.

Letter of Appreciation to Gil Alford

Whereas, in 1987 you almost single-handedly organized and initiated the Alford American Family Association and,

Whereas, in your capacity as Executive Assistant of AAFA since that time, you have by hard work, superb leadership and singleminded purpose, carried, sustained and have been the driving force in making the organization work and,

Whereas, by your seasoned good judgment, mature wisdom and perspicacity you have caused AAFA to grow steadily until it has reached a point of robust viability and,

Whereas, by your untiring efforts, your enthusiasm and your technical expertise, you produced a volume of work of enormous proportions in carrying out the purposes of this Association and,

Whereas, such devotion and accomplishments have been far above and beyond the normal calls of duty and in recognition thereof you are commended in the highest words of fulsome praise and,

Whereas, the Board of Directors has granted and on their behalf, it gives me great pleasure to confer on you Life Membership.

Your outstanding achievements in promoting the goals of the ALFORD AMERICAN FAMILY ASSOCIATION are exemplary and are in the highest and finest traditions of the ancient, proud, honorable and illustrious name of ALFORD.

I therefore set my hand and seal this date in the Year of our Lord One Thousand Nine Hundred and Eighty-Nine.

—Lodwick H Alford, President, AAFA

(President's Precept, cont. from p. 1)
 Gilbert K. Alford, Jr. traced the lineage of each and every member of the Association back to the earliest known person of the line. It was fascinating, and every member present was spell-bound. It was indeed a "tour de force" by Gil Alford.

That brings me to an effort of the Association to express adequately to Gil Alford our appreciation for his work. I am sure you will agree with me that there is no way it can be done. But we tried anyway. At the direction of the Board of Directors, a letter to Gil from the President was written extolling his

accomplishments and granting him Life Membership. At the close of the meeting in Houston the letter was read as a proclamation to the members assembled, who gave Gile a standing ovation. Wea also presented Gil and his lovely wife Mary a beautiful silver bowl . The letter appears on page 11 in this newsletter.

Now as I write this the holiday season is approaching, and I want to wish all of you happiness, good cheer, and good ancestor hunting. I look forward to again serving as your President in 1990.

Lodwick H. Alford, President, AAFA

Meeting Minutes & Tapes Available

Copies of the complete official minutes of the 1989 Annual Meeting in Houston are available for \$1.50 to cover the cost of copying and mailing.

At the Friday evening reception James P. Alford and Gil Alford video taped much of the activity. At the Saturday business meeting they continued taping, and Richard Stratton also taped most of the Saturday session. Copies of these video tapes (VHS) are available to the membership. There are several versions: raw, edited, business meeting only, etc. If you would like to purchase a tape or set of tapes, contact the Missouri office and advise them of the speeds available on your VCR. A list of the versions available and the number of tapes involved along with the price will be furnished in return. Video tapes will be not more than \$10.00 per tape and audio tapes will be not more than \$3.00 per tape.

Members may also obtain a copy of the charts used at the Alford Family Forum by sending \$4.00 to the Missouri office. Make your check payable to AAFA—not to Gil Alford.

If you would like to have an audio cassette tape of the Alford-composed marches that were played at the meeting, send a card to the Missouri office requesting a detailed list with price.

ALFORD HONORED: Burleson County Historical Society President Judy Richardson presents Past-President Catherine G. Alford with a special plaque "with gratitude for distinguished service" to the society. Mrs. Alford served as President of the society for 22 years. The two are pictured in front of the Kraitchar House Museum, one of the many projects Mrs. Alford was instrumental in.

Alfords in the News

THE BURLERSON COUNTY CITIZEN-TRIBUNE AND CALDWELL NEWS
 Caldwell, TX—Thurs., 27 July 1989

ALFORD RECEIVES LAW DEGREE

On Sunday, May 21, Lee Alford, IV, [AAFA Member #166] was awarded the Doctorate of Jurisprudence by the University of Texas School of Law. While at the Law School, Lee served as an executive officer in the Delta Theta Phi law fraternity and was selected for membership in the legal honor fraternity of Phi Delta Phi.

A 1982 graduate of Caldwell High School, Lee distinguished himself academically as class Valedictorian and the school's first National Merit Scholar. In addition to being a two-sport letterman, Lee was active in many school activities and organizations and held several elected offices. . . .

Lee attended Texas A&M University as a recipient of a President's Endowed Scholarship and graduated magna cum laude in 1986 with a double major in Accounting and Finance. While at A&M, Lee was a member of the Accounting and Finance honor societies of Phi Eta Sigma and Phi Kappa

Phi. Additionally, he was an active member of the College of Business Student Council and the DBA Fellows program within the college. . . .

During the last two of his three years in law school, Lee clerked for seven law offices in Austin, Houston, and DallasDuring the Spring of this year, Lee was privileged to serve as a legislative assistant to Senator Kent CapertonUpon completion of the Texas Bar Examination this summer, Lee will begin work as an associate in the Dallas law firm of Gardere & Wynne, the largest firm in that city and among the ten largest statewide.

Lee is the son of Mr. & Mrs. Lee Alford, III of Caldwell. He is the grandson of Mr. & Mrs. D.L. Alford, Jr. of Caldwell and of Col. Joseph B. Collerain, Sr. (ret.) and the late Alice Collerain of Houston.

In what appears to be the same issue of the CITIZEN-TRIBUNE a photograph of Catherine G. Alford, wife of D.L. Alford, was published above the following caption:

Booklist Additions

As promised, here is the list of additions to the Booklist members received with the June 1989 newsletter. Although it usually won't be this extensive, "Booklist Additions" will be a regular feature of *AAFA ACTION*. Also, as discussed at the Annual Meeting, we will probably publish a complete Master Booklist once a year, incorporating all the additions so that new members will have complete lists and everyone will have the convenience of one list.

For the benefit of all our new members and to refresh the memories of our long-time members, let me repeat some important points about the Booklist. It is a compilation of references to Alford's (and spelling variations) contained in books. Entries are organized by state and county. Family histories are listed at the end under their appropriate states whenever possible. Each entry lists the book name and publication data followed by the **name in bold print** of every Alford listed on the pages that the Association has. The page number where the name is found is listed next followed by a brief description of what information about the person is contained on the listed page. The Booklist has two important uses:

1. Not every library has every book that contains information about Alford's. If we all work together to extract Alford data from books located across the country and centralize this information, more data is available to more Alford researchers. Copies of any pages listed on the Booklist can be obtained from Nancy Dietrich, AAFA Librarian.
2. Gil Alford, AAFA Executive Assistant, enters into his computer the data on each Alford appearing in each source, enabling him to access masses of information for any researcher who needs it. The value of this service for a family organization is inestimable!

Additional points to keep in mind:

- No cemetery or census lists are included. The AAFA Cemetery and Census Committees compile these lists and *AAFA ACTION* publishes them as they are prepared.
- When you go to the library, archives, etc., take the Booklist with you so you won't duplicate work that's already been copied. Hint: Note the counties on this list in which Alford's appear. Look for other books pertaining to these counties—because we know Alford's were there.
- We also know Alford's were in many states that are not well represented on the list yet. Check sources in these states, i.e. Alabama, Louisiana, Missouri, Oregon, much of New England.

△ Entries preceded with this triangle indicate that the entry is incomplete in some way, usually because I have not seen the pages from the book.

- Send copies of pages that contain Alford info to Nancy Dietrich, AAFA Librarian. She will keep a file copy and distribute them to the appropriate committees, to Gil, and to me.

** Important—we love receiving your copies and transcriptions, but PLEASE remember to include a copy of the title page. If the publication date is on the back, write it on the copy or include it in the transcription. Also wonderful to have are introductions that contain interpretative material, indexes (don't forget Allford, Olford, and other variations), and any other pages you think will help understand the contents. Thanks!

The Booklist may hold important genealogical clues to your ancestry. Happy hunting!

Pam Thompson, Publications Editor/Booklist Compiler

MULTIPLE STATES

- National Society of Daughters of Founders and Patriots of America. *FOUNDERS AND PATRIOTS OF AMERICA INDEX*. N.p.: N. pub., 1975; reprint edition, Baltimore, MD: Genealogical Publishing Co., Inc., 1989. [This book lists the Society's volumes and page numbers where the lineage to the indexed founders and patriots may be found. We have title page and the only page that lists Alford's (no variations): **Benedictus**, 3 (b. 1619, m. 1640 to Joan Newton, d. 1683, lived in CT); **Elijah**, 3 (b. 1757, m. 1779 to Olive Adams, d. 1832); **Pelatihah**, 3 (b. 1739, m. 1768 to Anne Bacon, d. 1804).]

GEORGIA

Worth County—established from Dooly and Irwin, 1852

- Grubbs, Lillie Martin. *HISTORY OF WORTH COUNTY GEORGIA For the First Eighty Years 1854-1934*. Macon, GA: J. W. Burke Co., 1934. [Title page and the following pages that list Alford's: **Alexander**, 417 (immigrated to Boston with William); **Andrew Jackson**, 418 (b. 29 Jan 1847, son of Green Haywood Alford, moved to Worth Co.); **Benedictus**, 417 (immigrated to Boston with William); **Benjamin**, 417 (son of William, b. 1650); **Bennie Love**, 419 (daughter of Columbus Augustin and Janie (Johnston) Alford, m. 1910 to Malcolm Hugh Westberry); **Beulah**, 419 (daughter of Columbus Augustin and Martha (Sumner)

Alford, m. 1902 to W.R. Johnston); **Columbus A.**, 419-420 (son of Columbus Augustin and Janie (Johnston) Alford, m. 1913 to Ann Douglas); **Columbus Augustin**, 418 (b. 6 Feb 1850, son of Green Haywood Alford, moved to Worth Co. in 1871), 418-420 (biography, m. first Martha Sumner and had two children, m. second Janie Johnston and had seven children, d. 21 Sept 1908), 421 (picture of "Hon. C.A. Alford"); **Earl J.**, 419-420 (son of Columbus Augustin and Janie (Johnston) Alford, m. 1915 to Erin Shealy); **Elizabeth Leland**, 418 (b. 21 Sept 1848, daughter of Green Haywood Alford); **Francis Adner**, 418 (b. 18 March 1853, son of Green Haywood Alford); **Frankie**, 419 (daughter of Columbus Augustin and Janie (Johnston) Alford, m. 1912 to Will H. Westberry); **George Benton**, 418 (b. 24 July 1845, son of Green Haywood Alford); **Green**, 418 (son of Lodwick and Mary (Hall) Alford, b. 1788 in Wake Co., NC); **Green Floyd**, 419 (son of Columbus Augustin and Martha (Sumner) Alford, m. 1903 to Emily Claude Gibson), 420, 422 (biography); **Green Floyd, Jr.**, 422 (son of Green Floyd and Emily (Gibson) Alford, m. Mary Mays and had one child, Mary); **Green Haywood**, 418 (son of Green and Nancy Rose (Liles) Alford, b. 1820 in Wake Co., NC; m. Rebecca Jones 1844); **Helen**, 419-420 (daughter of Columbus Augustin and Janie (Johnston) Alford, m. 1922 to Ivan H. Mann); **James**, 417 (son of Benjamin, b. 1691); **James Gibson**, 422 (son of Green Floyd and Emily (Gibson) Alford, m. Mary Bance Joiner and had one child, **James Gibson, Jr.**); **James William Zion**, 417 (son of James, b. 1730, probably in NC); **Lodwick/Loderwick**, 418 (son of James William Zion and Judy (Harper) Alford); **Mattie Blanche**, 419 (daughter of Columbus Augustin and Janie (Johnston) Alford, m. 1911 to Edwin K. Gully); **Ruth**, 419-420 (daughter of Columbus Augustin and Janie (Johnston) Alford, m. 1924 to W.H. "Jack" Wimpy); **Salina Blanche**, 418 (b. 28 Apr 1857, daughter of Green Haywood Alford—birthdates of children of Green Haywood Alford taken from his Bible, in Blanche's possession), 423-424 (biography, m. F. Keit Godwin 1880 and moved to Worth Co., had five children: **Carlton**, **Vada**, **Rebecca**, **Columbus B.**, and **Clair**); **William**, 417 (b. in London 1608, immigrated to Boston and then to Worth Co.); **William Leorus Haywood**, 418 (b. 23 Oct 1863, son of Green Haywood Alford, moved to Worth Co.), 422-423 (biography, m. first Ellie Norris 1885 and had nine children: **H.B.**, **Ellie**, **Sadie**, **Maggie**, **Dewey**, **Myers**, **Jack**, and **Alton**; m. second Lucy Mell Overby and had eight children: **Haskel** and **Hoyl**, twins, **Beatrice**, **Leorus**, **Lodwick** [AAFA President], **Melvina**, **Mary**, **Marvin**, and **Louise**; William L.H. d. 16 June 1931.) NOTE: AAFA President Capt. Lodwick H. Alford, whose family is covered in this publication, warns that much of early Alford history in it is based on tradition and is not factual.]

NEW YORK

Statewide or Multiple Counties

• "Family Records—Davis/Alvord." *NEW YORK GENEALOGICAL AND BIOGRAPHICAL RECORD*, Vol. 99, No. 4 (Oct. 1968). [Copy of only page that lists Alford or variations in this issue: **Edith ALVORD**, 226 (b. 1868, daughter of John A. and Mary (Wilcox) ALVORD); **John A. ALVORD**, 226 (m. Mary E. Wilcox 1862 in State Line, NY, d. 1868); **John A. ALVORD, Jr.**, 226 (b. 1864, son of John A. and Mary (Wilcox) ALVORD); **John Abel ALVORD**, 226 (b. 1826); **Martha ALVORD**, 226 (b. 1820, m. Henry Baldwin 1841); **Mary Banks ALVORD**, 226 (b. 1812, d. 1819; b. 1865, daughter of John A. and Mary (Wilcox) ALVORD); **Nehemiah Banks ALVORD**, 226 (b. 1787, m. Rana Sherwood 1811); **Nehemiah Banks ALVORD, Jr.**, 226 (b. 1822, d. 1824); **Rana (Sherwood) ALVORD**, 226 (b. 1791, d. 1856); **Sarah Wakeman ALVORD**, 226 (b. 1866, daughter of John A. and Mary (Wilcox) ALVORD).]

Cities

• "Records of the First and Second Presbyterian Churches of New York City." *NEW YORK GENEALOGICAL AND BIOGRAPHICAL RECORD*, Vol. 11 (1880). [Transcription typed by Pamela Thompson: **Margaret**, 86 (m. John Clark 19 Feb 1760).]

NORTH CAROLINA

Statewide or Multiple Counties

• North Carolina Lions State Council. *A BRIEF HISTORY OF LIONISM IN NORTH CAROLINA: Forty-five Years of Service to Our Fellowman*. N.p.: North Carolina Lions State Council and The North Carolina Past District Governors Organization, 1966. [Title page and the following pages that list Alford: **Sam**, 45 (picture under "District Governors" section, 1943-44), 104 (appointed to Board of Directors for State Commission for the Blind), 112-113 (signed letter as "Chairman" and is mentioned in letter), 115 (of Henderson, listed as director of fund-raising drive in 1946 and 1947), 236 (listed as District Governor, 1943-44).

• North Carolina Social Register Foundation. *NORTH CAROLINA SOCIAL REGISTER 1964-65*. RALEIGH, NC: North Carolina Social Register Foundation, 1964. [Title page and the only page that lists Alford: **Frank O., Dr. and Mrs.**, 4.

• Powell, William S. *NORTH CAROLINA LIVES: The Tar Heel Who's Who*. Hopkinsville, KY: Historical Record Association, 1962. [Title page and the following pages that

list Alford: **Clarence Parker "Sam"**, 11-12 (biography focusing on activities in civic associations, b. 23 Oct 1901 near Louisburg, NC; m. Eleanor Eugenia Long 1927 [see North Carolina Lions State Council, *A Brief History of Lionism in North Carolina* for further information on Sam]); **Frank Oliver**, 12-13 (biography focusing on activities in civic and fraternal associations, b. 29 Aug 1898 in Louisburg, NC; m. Dr. Anne Pauline Smith 1947); **Lawrence Sidney**, 11-12 (father of Clarence "Sam" and Frank); **Susan Parker (Arrington)**, 11-12 (mother of Clarence "Sam" and Frank).]

Wake County—established from Cumberland, Johnston, and Orange, 1770

• Murray, Elizabeth Reid. *WAKE, CAPITAL COUNTY OF NORTH CAROLINA: Volume I, Prehistory through Centennial*. Raleigh, NC: Capital County Publishing Company, 1983. (Received title page)

OHIO

Statewide or Multiple Counties

• Bowers, Ruth and Anita Short. *GATEWAY TO THE WEST, VOLUME I*. Baltimore, MD: Genealogical Publishing Co., 1989. [All pages that lists Alford or variations, transcription typed by Pamela Thompson: **James**, 703 (m. Mary Hatfield 15 Feb 1821 Lawrence Co.); **Margret**, 482 (listed under Gallia Co. Wills, daughter of Stephen Wilson of Northwest Territory, will dated 27 Oct 1801, mentions wife Gane and land in Bath Co., VA); **Ames ALFRED**, 50 (m. Sarah A. Hover 1834 Allen Co.); **Isabell ALFRED**, 246 (b. Sullivan Co., TN, 27 Sept 1856, d. Clinton Co., OH, 29 Aug 1900, wife of George Alfred—from Richland Negro Cemetery, Clinton Co.); **Mary ALFRED**, 297 (m. Joel Holloway 7 Dec 1815 Columbiana Co.); **Roy ALFRED**, 478, (m. Mary Ann Vonschritz 16 Feb 1814 Gallia Co.).]

• Henderson, Frank D. et al. *THE OFFICIAL ROSTER OF THE SOLDIERS OF THE AMERICAN REVOLUTION BURIED IN THE STATE OF OHIO*. Columbus, OH: The F.J. Heer Printing Co., 1929. [Title page and the only page that lists Alford or variations: **Annie**, 14 (daughter of Benedict and Huldah Alford); **Benedict**, 14 (served 1776, 1777, 1780, b. 1757 in Windsor, CT, m. Huldah _____, d. 1835, came to Welshfield, Troy Twp, OH 1835; father of Benedict; son of Benedict) **Elijah**, 14 (lived in Windham and drew pension); **Jerusha (Ashley)**, 14 (husband and mother of Benedict).]

• Powell, Esther Weygandt. *EARLY OHIO TAX RECORDS*. Baltimore, MD: Genealogical Publishing Co., Inc., 1971; reprint edition, 1985, including *The Index to Early Ohio*

Records, which was originally published in 1973. [Title page and the only pages that list Alford or variations: **Anna**, 319 (1815 Land Transfers, Portage Co., Sharon Twp); **Jacob**, 436 (1801 Virginia Military District Tax List from Book of Entries of the Lands of Non-Residents); **John**, 315 (1816 Tax List, Portage Co., Palmyra Twp); **Sarah**, 319 (1815 Land Transfers, Portage Co., Sharon Twp); **Elijah ALLFORD**, 316 (1816 Tax List, Portage Co., Sharon Twp); **Levi ALLFORD**, 316 (1816 Tax List, Portage Co., Sharon Twp); **Oliver ALLFORD**, 316 (1816 Tax List, Portage Co., Sharon Twp).]

Ashtabula Co.—established from Trumbull, Geauga, 1808

• Ashtabula County Genealogical Society. *ASHTABULA COUNTY HISTORY THEN AND NOW*. Dallas, TX: Taylor Publishing, 1985. [Title page and the following pages that lists Alford or variations: **Destine**, 281 (grantee in first conveyance of land by deed in Hartsgrove, OH, 1827, and ancestor of Harold Fuller, who still lives on the farm); **Melanchton**, 281 (son of Destine); **Charles H. ALFRED**, 164 (father of Milton, m. Jane Ellen Strickland, lived in Ashtabula); **Jane Crosby ALFRED**, 164 (daughter of Milton and Elizabeth, b. 1939), 468 (short family biography, m. Robert Matthew Riddell 1961 in Ashtabula, had two children, David and Rachel, live in Ashtabula); **Milton Royal ALFRED**, 164 (short family biography, m. Elizabeth Elnora Douglass 1937 in Augusta, GA, d. 1968, lived in Ashtabula).]

Belmont Co.—established from Jefferson, Washington, 1801

• Berry, Ellen T. and David A. Berry. *EARLY OHIO SETTLERS: PURCHASERS OF LAND IN SOUTHEASTERN OHIO, 1800-1840*. Baltimore, MD: Genealogical Publishing Co., Inc., 1984. [Title page, map page, and the only page that lists Alford (no variations): **Jonas**, 3 (of Belmont Co., purchased land in 1815 and 1817 in Belmont Co.).]

Coschocton Co.—est. from Muskingum, Tuscarawas, 1810

• *MARRIAGES COSHOCTON COUNTY, OHIO 1811-1930, Vol I*. Coshocton, OH: N. Pub., 1967. [Title page and all pages that list Alford or variations—Vol. I lists marriages by grooms and Vol. II is an index to brides in Vol. I: **Martha R.**, 378 (m. 1836 to Jacob Vandervier); **Fanny ALFERD**, 22 (m. 1841 Robert Beatyam).]

Gallia County—established from Washington, Adams, 1803

• Green, Karen Mauer. *PIONEER OHIO NEWSPAPERS 1793-1810, GENEALOGICAL AND HISTORICAL ABSTRACTS*. Galveston, TX: The Frontier Press, 1986. [Title page and the only pages that list Alford or variations:

Jabez, 269 (21 March 1808 *Scioto Gazette and Chillicothe Advertiser*, appraised a horse, Rowan Township, Gallia Co.); Jobez ALFRED, 265 (29 Oct 1807 *Scioto Gazette and Chillicothe Advertiser*, appraised a mare, Rackoon Township, Gallia Co.).]

Portage County—established from Trumbull, 1808

• Johnson, William Cumming Jr. *LIST OF VOTERS IN PORTAGE COUNTY, OHIO 1816–1856*. N. p.: N. pub., 1985. [Title page and the only page that lists Alford or variations: Barzillai L., 2 (1851 Windham Twp); Elijah, 2 (1816 Sharon Twp, 1851 Windham Twp); Elijah, Jr., 2 (1816 Sharon Twp); Levi, 2 (1851 1816 Sharon Twp); Oliver, 2 (1816 Sharon Twp); Samuel, 2 (1851 Mantua Twp); Sidney L., 2 (1851 Windham Twp); S.L. ALVORD, 2 (1856 Ravenna).]

Preble Co.—established from Montgomery and Butler, 1808

• Shilt, Rose. *PREBLE COUNTY, OHIO MARRIAGE RECORDS 1841–1859, Volume III*. Union City, IN: Gateway to the West Publications, 1973. [Title page and the only page that lists Alford (no variations): Joseph J., (m. 1847 to Thersis Emeline Thruwits).]

Scioto County—established from Adams, 1803

• Shoemaker, Caryn R. Fuller and Betty J. Sisler Rudity. *MARRIAGE RECORDS OF SCIOTO COUNTY, OHIO 1803–1860*. Baltimore, MD: Genealogical Publishing Co., Inc., 1987. [Title page and the only pages that list Alford or variations: C.W., 4 (witness marriage 1836); Chauncey, 75 (father of Nancy Eliza); Harriet J., 75 (mother of Nancy Eliza); Nancy Eliza, 75 (m. Teamon Lemison 1845); Roswell B. ALFERD, 2 (m. Martha Lodge 1836); Prudence Sabina ALFRED, 26 (m. George W. Cole 1845).]

TENNESSEE

Statewide or Multiple Counties

• Fischer, Marjorie Hood. *TENNESSEE TIDBITS 1778–1914 Volume I*. Easley, SC: Southern Historical Press, 1986. [Title page, Introduction, and the only page that lists Alford (no variations): John N., 5 (d. before 1 Nov 1847 when administrators were appointed for his estate, Hardin Co.); Martha L., 5 (minor heir of Robert, Humphreys Co.); Robert, 5 (d. before 7 Feb 1842 when a settlement was made as guardian for his heir, Humphreys Co.).]

• Fischer, Marjorie Hood and Ruth Blake Burns. *TENNESSEE TIDBITS 1778–1914 Volume II*. Vista, CA: Ram Press, 1988. [Title page, Introduction, and the only page that lists

Alford (no variations): Hutson, 3 (released from paying taxes for 1804 because he did not arrive in Wilson Co. until 12 May 1804).]

• Fulcher, Richard Carlton. *1770–1790 CENSUS OF THE CUMBERLAND SETTLEMENTS: Davidson, Sumner and Tennessee Counties (In What is Now Tennessee)*. Baltimore, MD: Genealogical Publishing Co., Inc., 1987. [Title page, Introduction (which explains that this compilation of records is a census substitute for the lost early Federal Census returns), and the only page that lists Alford or variations: William, 1 (bought land on Elk Fork 1790); John ALFRED, 1 (his heirs sold land in 1789 on Spring Creek).]

• Lucas, Rev. Silas Emmett Jr. and Ella Lee Sheffield. *35,000 TENNESSEE MARRIAGE RECORDS AND BONDS 1783–1870, Volume 1 A–F*. Easley, SC: Southern Historical Press, 1981. [Title page, Introduction, and the only page that lists Alford or variations—none in Volumes 2 or 3: Burtis, 15 (m. Mary Bryant 1807 Wilson Co.); John, 15 (m. Jeney McElhaten 1811 Grainger Co.); Julius, 15 (m. Ann Hays 1806 Wilson Co.); Lothwick B., 15 (m. Lindy R. Hall 1819 Sumner Co.); R.N., 15 (m. M.A. Edmiston 1862 Lawrence Co.); W.D. ALFRED, 15 (m. G. Menees 1848 Robertson Co.).]

• Sistler, Byron and Barbara Sistler. *EARLY EAST TENNESSEE MARRIAGES*. Nashville, TN: Byron Sistler & Associates, 1987. [Title page, Introduction, county description page, and the only pages that list Alford or variations:

Volume 1, Grooms:

Daniel, 4 (m. Nancy Lea 1849 Campbell Co.); James, 4 (m. Phoebe Creed 1871 Carter Co.; m. Rebecca Creed 1870 Carter Co.); James C., 4 (m. Rhoda Baldwin 1835 Rhea Co.); John, 4 (m. Jeney McElhaten 1811 Grainger Co.; m. Sarah Maddy 1835 Roane Co.); John M., 4 (m. Hannah Holloman 1847 Meigs Co.; m. Lucy Ann Cordell 1841 Roane Co.); Mashack, 4 (m. Rebecca Edwards 1847 Roane Co.); Robert, 4 (m. Alcey Evans 1849 Roane Co.); Robert C., 4 (m. Eliza Webb 1843 Roane Co.; m. Margaret J. Moorefield 1852 Knox Co.); William, 4 (m. Jane Riddle 1840; m. Susan Rambo 1846 Blount Co.); Arlander D. ALFRED, 4 (m. Polly Jane Holloman 1853 Meigs Co.);

Volume 2, Brides

Carlina, 4 (m. Reese Ingle 1860 Meigs Co.); Jane, 4 (m. James A. Winton 1841 Rhea Co.); Malinda, 4 (m. William Ewing 1836 Roane Co.); Martha, 4 (m. Andrew McFaddin 1849 Blount Co.); Mary, 4 (m. John Knox 1844 Roane Co.); Nancy, 4 (m. M.A. Lain 1853 Blount Co.); Rachel, 4 (m. George F. Riddle

1841 Rhea Co.); **Sarah Jan**, 4 (m. Gideon Branham 1859 Meigs Co.); **Martha ALFERD**, 4 (m. Curtis Lee 1852 Claiborne Co.); **Isey ALFRED**, 4 (m. Abraham Bowers 1868 Carter Co.); **Lemsea ALFRED**, 4 (m. James Beady 1852 Meigs Co.); **Martha Jane ALFRED**, 4 (m. Washington May 1850 Johnson Co.); **Rebecca ALFRED**, 4 (m. William C. Bowers Carter Co.).]

• **Sistler, Byron and Barbara Sistler. INDEX TO EARLY TENNESSEE TAX LISTS.** Evanston, IL: Byron Sistler & Associates, 1977; reprint edition, 1983. [Title page, Introduction, and the only pages that lists Alford's or variations: **Boldy**, 3 (Williamson Co. 1815); **Burtis**, 3 (Williamson Co. 1815); **John**, 3 (Williamson Co. 1815; Davidson Co. 1811); **Nelson**, 3 (Davidson Co. 1811); **Jonathan ALFRED**, 3 (White Co. 1825); **Hutson OLFORD**, 152 (Wilson Co. 1804).]

• **Sistler, Byron and Barbara Sistler. TENNESSEE MORTALITY SCHEDULES.** Nashville, TN: Byron Sistler & Associates, 1984. [Title page and the only page that lists Alford's or variations: **Frank**, 4 (d. July 1880 Rutherford Co., age 60, married, b. TN); **Jeff**, 4 (d. Jan 1880 Gibson Co., age 1, b. TN); **John**, 4 (d. Apr 1880 Wayne Co., age 75, married, b. NC, parents b. NC); **Jones**, 4 (d. Oct 1860 Maury Co., age 50, married, b. NC); **M.E.**, 4 (sex omitted, d. Feb 1860 Gibson Co., age 28, married, birthplace illegible; female, d. June 1880 Lincoln Co., age 36, single, b. TN); **Richard B.**, 4 (d. Sept 1880 Davidson Co., age 66, married, b. GA, parents b. VA); **Enoch C. ALFERD**, 4 (d. Apr 1850 Meigs Co., age 1, b. TN); **Lucinda ALFERD**, 4 (d. Oct 1850 Meigs Co., no age, b. TN).]

• **Whitley, Edythe Rucker. RED RIVER SETTLERS; Records of the Settlers of Northern Montgomery, Robertson, and Sumner Counties, Tennessee.** Baltimore, MD: Genealogical Publishing Co., Inc., 1980. [Title page and the only page that lists Alford's (no variations): **John**, 97 (1789 land grant issued by NC, Tennessee Co.).]

• **Whitley, Edythe Rucker. TENNESSEE GENEALOGICAL RECORDS: Records of Early Settlers from State and County Archives.** Baltimore, MD: Genealogical Publishing Co., Inc., 1980. [Title page the only pages that list Alford's (no variations): **John**, 315 (m. Nancy Taylor 1806 Wilson Co.); **Jules**, 314 (m. Ann Hays 1806 Wilson Co.); **William**, 100 (1791 original grant).]

Lawrence County—established from Hickman, Maury, 1817

• **Alford, Bobby** (1106 Hickory St., Lawrenceburg, TN 38464). Untitled typewritten manuscript. Feb. 14, 1977. Xerox copy sent to AAFA on Sept. 6, 1989. [This 32 page

manuscript contains a history of the family of **Bailey Alford**, b. in Franklin Co., NC, on 15 July 1781, and his wife, **Nancy Williams**, b. 24 July 1780 in Wake Co., NC. They moved to Lawrence Co., TN, before 1818, with Nancy's parents, **Hickman and Winna (Clifton) Williams**, and siblings. **Bailey and Nancy** had ten children:

Alsey, b. 1802 in NC; wife unknown, but had 3 children. **Isaac W.**, b. 1805 in NC; m. **Mary P. Edmiston**.

Extensive biography included in manuscript. **Isaac and Mary** had 10 children, all b. in Lawrence Co., TN:

James Madden, b. 1832; m. **Martha Frances Childress**. Extensive biography and copies of Civil War records and pension application included in manuscript. **James and Martha** had 8 children:

Emma Cornelia, b. 1859; m. **Harvey Daniel McClure**. They had 3 children: **Maude**, **Frances Sue**, and **Claud**. Biography included.

William R., b. 1861; d. 1882.

James Berlin, b. 1866; m. **Welkin Cole**. They had 5 daughters: **Willie**, **Lena**, **Fannie**, **Mattie**, and **Maggie**. Biography included.

Charles, b. 1868. Moved to TX. Had a son named **Burns Alford**, who published the song "Happy in Him" in 1927 in Mineral Wells, TX (copy of song included in manuscript).

Edward, b. 1869; d. 1871.

George, b. 1872; d. 1873.

Joseph Herbert, b. 1874

Maggie, b. 1876; m. **William R. Lewis**. Their only surviving son, **Floyd**, was living in **Cookeville, TN**, in 1980. Biography included.

Nancy Jane, b. 1834; m. **Stephen Alexander Nowlin**. Short biography included.

Isabella, b. 1836.

Joseph Harrison, b. 1837. Manuscript states, "Complete biography later." However, it was not included in the pages we have.

Robert Newton, b. 1839. Manuscript states, "Complete biography later." Although it was not included in the pages we have, pp. 23-28 are entitled, "Civil War Service of Robert Newton Alford and his Brothers."

Thomas B., b. 1842. Short biography included.

William P., b. 1844.

Margaret Elizabeth, b. 1848; never married.

Mary Etta "Molly", b. 1845; never married.

Sarah, b. 1851; m. **John H Harrison**.

Mahalay, b. 1807 in NC; m. **Harvey A. Alexander**.

Winney, b. 1810 in NC; m. **William C. Hicks** and left TN. Manuscript states, "See inserted pages," but they were not included in the pages we have.

Chirena, b. 1812 in NC; m. **John Andrews** and moved to IN. Manuscript states, "See additional information about Chirena," but it was not included in the pages we

have.

Elizabeth, b. 1815 in either TN or NC; m. Harlow Tripp. Apparently both parents d. between 1850 and 1860 because the 1860 census shows the Tripp children living with the widow of Isaac Alford.

Milly, b. 1817 in TN; m. John Greenhaw and moved away.

Thomas Jackson, b. 1818 in TN; d. young.

Eli Harrison, b. 1820 in TN; m. Elizabeth Hannah. Biography included. Eli and Elizabeth had 8 children: Chesina Jane, William H., Nancy A., James H., Madden D., Mary A., John R., and Duet G.

William Madison, b. 1824 in TN; d. of wounds suffered at the Battle of Monterrey in September, 1846. Extensive biography included.

TEXAS

Statewide or Multiple Counties

• Forrister History Company. *PAST HISTORY AND PRESENT STAGE OF DEVELOPMENT OF TEXAS*. Chicago, IL: Regan Printing House, n.d. [Title page and the following pages (very difficult to read—need better copies) that list Alford: **Albert Nelson**, 30-31 (biography, b. Crockett, Houston Co., 1841, m. first Cornelia Coleman 1867 and they had five children, m. second Mrs. Lobitha Brooks 1885 and they had seven children, served in Civil War); **George**, 30 (grandfather of Albert Nelson, first mayor of Detroit, MI); **George G.**, 30 (father of Albert Nelson, b. NY 1805, m. Anna Barfield, settled in New Madrid, MO in 1827, moved to TX in 1832, fought in Texas' War of Independence, d. 1847 in Crockett, TX)]

• Johnson, Frank W. *A HISTORY OF TEXAS AND TEXANS, Vol. III*. Chicago and New York: The American Historical Society, 1914. [Title page and the following pages that list Alford: **Egbert B.**, 1250-1251 (biography, b. 14 Apr 1859 in Lafayette, Chambers Co., AL, son of John Rogers and Amelia Beall Alford, moved to TX in 1874, m. first Alice Neal 1880, who d. in 1881, and m. second Ella Overton 1884 and they had six children: **John R.**, **Josie B.**, **Bessie L.**, **Jessie B.**, **E.B., Jr.**, and **Richard Overton**); **John Rogers**, 1250 (father of Egbert B., b. Walton, GA, 1810, moved to AL in 1836, m. Amelia Beall, who d. in 1894, and they had the following children:

Josephine, m. Major Terrell, d. Rusk Co., TX
Lenora, m. Charles Taliaferro, lived in Talapoosa, GA
Augustus O., lived in Overton, TX
Achsa, m. Richard Taliaferro of GA
Emma, m. Burton Dabb, d. in Rome, GA
Eliza, m. George Gammell, lived in Lafayette, AL
John R., d. in Overton, TX
James, lived in Overton, TX

Kinchen B., lived in Houston, TX

Egbert B., lived in Henderson TX

George W., lived in Rome, GA

Kinchen B., 1250 (father of John Rogers, had four children: **James W.**, **Mary (Alford) Beall**, **Feraby (Alford) Hudson**, and **John R.**.)—see Rusk County Historical Commission, *Rusk County History*, for more information on this family

Rusk County—established from Nacogdoches, 1843

• Rusk County Historical Commission. *RUSK COUNTY HISTORY*. N.p.: Rusk County Historical Commission, 1982. [Index and the following pages that list Alford (Index shows other pages listing Alford, but we don't have them): **Bessie Lou**, 88 (biography, b. in Overton, TX, daughter of E.B., Sr., and Ella Overton Alford, m. Ben David Clower; picture of Bessie, Josie, and their uncle Major James Addison Taliaferro), 487 (mentioned in article on Rusk County Memorial Library); **E.B. "Benson", Jr.**, 89-90 (biography, son of E.B. and Ella Overton Alford, m. Maude Elizabeth Woodyard 1923); **E.B., Sr.**, 64 (picture of his home in Overton), 89 (biography, b. 1858, m. Ella Overton), 487 (mentioned in article on Rusk County Memorial Library); **Elizabeth**, 90 (daughter of John R., Jr., and first wife); **Jesse Burks, Jr.**, 90 (son of Jesse and Lucille Rayford Alford, has two children: **Ann** and **J.B. III**); **Ella**, 90 (daughter of John and Susan Landon Alford, m. _____ McDonald and they have three children: **Susan**, **Margaret**, and **Allen**); **Jesse Burks, Sr.**, 90 (biography, son of E.B. and Ella Overton Alford, m. Lucille Rayford); **John R., Jr.**, 90 (son of John and Susan Landon Alford, m. first _____ and second Margie Stewart); **John R., Sr.**, 64 (picture of his home in Henderson), 90 (biography, son of E.B. and Ella Overton Alford, m. Susan Landon); **John R. III**, 90 (son of John R., Jr., and first wife, killed in accident); **Josie Beall**, 90-91 (biography, daughter of E.B. and Ella Overton Alford, m. John Julian "Don" Rayford and they had three children: **J.J. "Jack" Jr.**, **Bessie Lou**, and **Jesse David**), 487 (mentioned in article on Rusk County Memorial Library); **Jo Ann**, 91 (daughter of Richard and Charlin Cox Alford, m. William Miller Banister and they have three children: **Bess Ella**, **Kara**, and **William M., Jr.**); **Kenneth B.**, 89 (brother of E.B.); **Landon**, 91 ([AAFA Member #2] biography, son of John and Susan Landon Alford, m. Phyllis Potthast and they have three children: **Eugene**, **Benson Warren**, and **David**), 487 (mentioned in article on Rusk County Memorial Library); **Louella Beatrice**, 91 (daughter of Richard O. and Charlin Cox Alford, m. Don G. Wilk; and they have two children: **Emily Ann** and **Douglas**); **Marlwyn**, 90 (daughter of Jesse and Lucille Rayford Alford, m. Russell B. Watson, Jr.); **Mary Elizabeth**, 89 (daughter of E.B., Jr., m. Dr. T.G. Coleman); **Richard O.**, 91 (biography, son of E.B. and Ella Overton Alford, m. Charlin B. Cox).]—see Johnson, *A History of*

Texas and Texans, for further information on this family

Tarrant County—established from Navarro, 1849

• Paddock, Capt. B.B. *HISTORY OF TEXAS—FORT WORTH AND THE TEXAS NORTHWEST EDITION, Vol. III*. Chicago and New York: The Lewis Publishing Company, 1922. [Title page and the following pages that list Alford's: **James P.**, 347 (father of Robert W., m. Minerva Maulding, early resident of Fort Worth, served in State Legislature, had ten children); **Robert W.**, 346-347 (biography, b. Fort Worth 1871, son of James P. and Minerva Maulding Alford, m. Mary Castle 1892 and they had three daughters, Cecilia, Catherine, and Roberta).]

VIRGINIA

Statewide or Multiple Counties

△ Crozier, William Armstrong, ed. *VIRGINIA COUNTY RECORDS, Volume IX*. [Abstract typed by Henry G. Alford; no publication data or page number: **Jacob** (private Continental line 3 years service).]

• Kegley, May B. *EARLY ADVENTURERS ON THE WESTERN WATERS: Vol II—The New River of Virginia in Pioneers Days 1745-1800*. Published 1982. [The following pages that list Alford's: **Charles**, 387 (mentioned in estate sale of Moses Alford, 1822); **Elizabeth**, 367 (wife of Thomas; also the name of a probably daughter of Thomas and Elizabeth, who m. Joseph Baker 1793); **James**, 367 (possibly a son of Thomas and Elizabeth, living in Gibson Co., IN, in 1818); **Jane**, 367 (possibly a daughter of Thomas and Elizabeth, m. Jeremiah Hewitt); **John**, 367-368 (son of Thomas and Elizabeth, m. Eleanor Hoge 1789); **Mary**, 367 (daughter of Thomas, m. Charles Baker 1786); **Moses**, 367-368 (son of Thomas and Elizabeth, lived in Wythe Co., d. about 1822); **Polly**, 368 (administrator of estate of Moses Alford, 1822); **Thomas**, 367 (short biography based on records, settled in Draper's Valley in 1768, m. Elizabeth _____), 368 (son of Moses); **William**, 368 (mentioned in estate sale of Moses Alford, 1822).]

△ Meyer, Virginia. *ADVENTURES OF PURSE AND PERSON VA*. [Abstract typed by Henry G. Alford; no publication data or page number: **James** (granted administration of estate of Robert Cade Sr. 1769—probably in NC).]

△ *QUIT RENTS OF VA. 1704*. [Abstract typed by Henry G. Alford; no publication data or page number: **John** (New Kent Co. 240 acres and Queens Co. 200 acres).]

△ *REGISTER OF ANCESTORS THE NATIONAL SOCIETY OF COLONIAL DAMES OF AMERICA IN THE COMMON-*

WEALTH OF VIRGINIA. [Abstract typed by Henry G. Alford; no publication data or page number: **Elizabeth**, m. John Bates, probably Halifax Co.—John was b. 1715 and d. 1766).]

△ Smith, Peter. *VIRGINIA'S EASTERN SHORE, A HISTORY OF NORTHAMPTON AND ACCOMACK COUNTIES*. [Abstract typed by Henry G. Alford; no publication data or page number: **John** (mentioned in 1661 Northampton disposition regarding height of his dwelling (?).)]

△ Tepper, _____. *PASSENGERS TO AMERICA*. [Abstract typed by Henry G. Alford; no publication data or page number: **Mary** (spinster, bound for Maryland from London 1774); **Nico** ("aboard the Amitie George Downes Mr to St. Christophers."); **William** (printer, bound for Maryland from London 1774).]

△ *VIRGINIA LAND PATENTS OF THE COUNTIES OF NORFOLK, PRINCESS ANNE, AND WARWICK*. [Abstract typed by Henry G. Alford; no publication data or page number: **John** (mentioned in land grant to Wm. Havercomb for transportation of 18 persons, one being John, 1672).]

Accomack County—established from Northampton, 1634

△ *ACCOMACK CO. TITHABLES 1663-1695*. [Abstract typed by Henry G. Alford; no publication data or page number: **David** (listed 1691, 1693-1695); **John** (listed 1664, 1687, 1688, 1690-1695); **Wm.** (listed 1686, 1688-1695); **John ALFRED** (listed 1689).]

Isle of Wright County—original shire, established 1634

△ Northes, John Bennett. *17TH CENTURY ISLE OF WRIGHT CO*. [Abstract typed by Henry G. Alford; no publication data or page number: **John** (mentioned in horse sale 1673); **Wm.** (of Elizabeth City, a party in sale of servant 1672).]

Middlesex County—established from Lancaster, 1673

△ National Society of the Colonial Dames of America in the State of Virginia. *THE PARISH REGISTER OF CHRIST CHURCH, MIDDLESEX COUNTY, VA. FROM 1653 TO 1812*. Richmond, VA: Wm. Ellis Jones, Steam Book and Job Printer, 1897. [Title page and the following pages that list Alford's: **John**, 38 (father of Sarah); **Lettice**, 38 (wife of John and mother of Sarah); **Mary**, 43 (wife of Richard, d. 1706), 83 (m. 1716 to John Pendergrass); **Richard**, 43 (husband of Mary); **Sarah**, 38 (baptized 1689, daughter of John and Lettice).]

York County—original shire, established 1634

△ Harris, Malcolm Hart. *OLD KENT COUNTY SOME ACCOUNTS OF THE PLANTATIONS AND PLACES IN NEW KENT COUNTY*. [Abstract typed by Henry G. Alford; no publication data or page number: Goodrich, Julius, Lodwick (all to tithe near White House Plantation—no date).]

New Kent County—established from York (and James City), 1654

△ Weisiger, Benjamin B. III. *YORK COUNTY RECORDS*. [Abstract typed by Henry G. Alford; no publication data or page number: John, sued Thomas Kirby for non-payment for carpentry work, 1668].]

Cities

△ Chapman, _____. *WILLS AND ADMINISTRATIONS OF ELIZABETH CITY, VA. 1688–1800*. [Abstract typed by Henry G. Alford; no publication data or page number: William (in index under 1689–1699 section, but page was missing).]

FAMILY HISTORIESMultiple States

• “Book Review [of *A Genealogy of the Descendants of Alexander Alvord, an Early Settler of Windsor, Conn., and Northampton, Mass.*, by Samuel Morgan Alvord, published in 1908].” *NEW YORK GENEALOGICAL AND BIOGRAPHICAL RECORD*, Vol. 40, No. 2 (April 1909). [Transcription typed by Pamela Thompson: Alexander, Benedict, and Joanna, p. 140 (mentioned in review—appear in New England about 1645, children of Thomas); Thomas, p. 140 (mentioned in review—of Whitestaunton, County Somerset, England).]

• Candage, Charles Samuel and Ralph Ernest Peak. *HEARD-HURD GENEALOGY 1610-1987: Some Descendants of John and Elizabeth (Hull) Heard of Dover, New Hampshire*. Camden, ME: Picton Press, 1988. [The only page that lists Alford or variations, transcription typed by Pamela Thompson: Elmer Hurd, 787 (son of James Jesse, b. 1 Nov 1907); James Jesse, 787 (b. 13 Aug 1881; m. 29 June 1904 in Pawnee City, NE, to Lucetta Hurd, daughter of John M. and Mary E. (Hill) Hurd, b. 12 Nov 1876; they lived in Glendale, CA); John, 787 (son of James Jesse); Lucille, 787 (daughter of James Jesse); Marjorie Elizabeth, 787 (daughter of James Jesse, b. 20 Dec 1905; m. in Manhattan, KS, to William E. Penner).]

• Cocheu, Lincoln. “The Van Kouwenhoven—Conover Family.” *NEW YORK GENEALOGICAL AND BIOGRAPHICAL RECORD*, Vol. 82, No. 3 (July 1951). [Transcription typed by Pamela Thompson: William, 180 (of New York m. 17 Dec 1828 to Catharine Covenhoven, baptized 6 Oct 1811 in the Freehold-Middletown Dutch Church, Middletown, NJ, daughter of Garret and Maria (Schenck) Covenhoven—possibly moved to western PA with other family members).]

• Harlee, William Curry. *KINFOLKS: A GENEALOGICAL AND BIOGRAPHICAL RECORD of Thomas and Elizabeth (Stuart) Harlee, Andrew and Agnes (Cade) Fulmore, Benjamin and Mary Curry, Samuel and Amelia (Russell) Kemp, John and Hannah (Walker) Bethea, Sterling Clack and Frances (King) Robertson, Samuel and Sophia Ann (Parker) Dickey—Their Antecedents, Descendants, and Collateral Relatives*. New Orleans, LA: By the author, 1934. [Title page, Table of Contents, all of Prelude and Preface (pp. iv-xxxii), all of State and County Records (pp. 1-93, comprising a history of the formation of southern state counties and locations of records therein), partial Cemetery Records (pp. 94-97, 116-125, 132-133), Index of Alford (over two pages long, listed by the person’s designation number rather than by page number), and what appears to be all pages listing Alford (154 pages on 77 sheets). Most of the Alford material seems to be in the Andrew and Agnes (Cade) Fulmore section, with another group in the John and Hannah (Walker) Bethea section, and much of the material concerns North Carolina, especially Robeson Co. Major sections include:

- pp. 1436-1473, family of Wiley and Clarissa Richardson (Fulmore) Alford
- pp. 1326-1335, family of Sion and Clarky (McTyer) Alford

Due to the large number of Alford in this massive work, they will not be listed individually in the Booklist. It is suggested that interested readers obtain a copy of the index. We also have a partial copy of the Advance Booklet which the author sent to living descendants of the main couples named in the title for corrections. Included in our copy is the section listing Alford descendants of the Fulmore line.]

• Rambo, Beverly Nelson. *THE RAMBO FAMILY TREE: DESCENDANTS OF PETER GUNNARSON RAMBO, 1611-1986*. Decorah, IA: Anundsen Publishing Company, 1986. [Title page and the following pages that list Alford: Arthur C., 607 (b. 1869, son of Marshall and Charity); Bailey M., 607 (b. 1875 and d. 1952, son of Marshall and Charity); Eliza, 291 (daughter of William and Susan, b. 1848, probably in TN); Ella M., 607 (b. 1871, daughter of Marshall and Charity); Haidee, 607 (b. 1881 and d. 1968, child of Marshall and Charity); Helen, 758 (m. William Harris Bankston, Jr.—no place, no date but possibly late 19th century); Homer M., 607 (b. 1883, son of Marshall and

Charity); **Howard**, 607 (b. 1887, son of Marshall and Charity); **John**, 34 (mentioned in 1750 will of Mathias Matson of Gloucester Co., NJ, as a previous owner of Matson's land), 104 (mentioned in 1771 will of _____ Richman, husband of Mathias Matson's daughter Catherine, as previous owner of Richman's land—no place named, but probably NJ), 507 (b. 1854 in TN, m. Rebecca Rambo 1859 in Jefferson Co., MO, d. 1886 in Dallas Co., MO; son of John and Rebecca, b. circa 1878); **Marshall T.**, 607 (m. Charity Self and lived in Amite, LA); **Murray L.**, 607 (b. 1871 and d. 1944, son of Marshall and Charity); **Parker**, 791 (m. Sophia Smith, lived in Buffalo, MO—no date but probably mid-twentieth century); **Pearl**, 607 (b. 1885, daughter of Marshall and Charity); **Susan**, 507 (daughter of John and Rebecca, b. circa 1876); **William**, 291 (m. Susan (Wright) Rambo 1845—no place named, but probably TN).]

• Smith, Samuel Stelle. "Peter Smith of Jamaica, Long Island, and Some of His Descendants." *NEW YORK GENEALOGICAL AND BIOGRAPHICAL RECORD*, Vol. 85, No. 3 (July 1954). [Transcription typed by Pamela Thompson: **Alanson ALVORD**, 164 (b. 30 June 1803 in Granby, MA; d. 2 Dec 1862 in Warren, PA; m. (1) Maria Wilberforce Force 1834 in Elizabeth, NJ.; m. (2) 1837 in Brimfield, MA, to Adaline Barrows; m. (3) 1849 in Wethersfield, IL, to Sarah Frances Little); **Gad ALVORD**, 164 (father of Alanson); **Maria Wilberforce ALVORD**, 164 (daughter of Alanson and Maria Force Alvord, b. 1836 in Chester, MA; m. 1858 in Grass Lake, MI, to Rev. Daniel Vrooman and had two children b. in China where they were missionaries, Grace and Katherine Maria; d. 29 Aug 1866 in Brooklyn, CA [?]); **Phebe (White) ALVORD**, 164 (mother of Alanson).]

Connecticut

• "Book Review [of *The Ancestors and Descendants of Consider Alford and His Wife Lucy Fitch Kennedy*, by Eileen Alford, published 1971]." *NEW YORK GENEALOGICAL AND BIOGRAPHICAL RECORD*, Vol. 103, No. 2 (Apr 1972). [Transcription typed by Pamela Thompson: Consider, pp. 111-113 (in Hartford, CT, 1801; review gives no indication of Alford family coverage after 1801).]

• "Family Records — Davis / Alvord." *NEW YORK GENEALOGICAL AND BIOGRAPHICAL RECORD*, Vol. 99, No. 4 (Oct 1968). [Copy of page listing records "copied from a Holy Bible published at Hartford in 1848. . . A note indicates that the early records were copied into this volume from an 1815 Bible. On the flyleaf appears "John A Alvord, Southport, Conn., June 29, 1849."]: **Edith ALVORD**, 226 (b. 1868, daughter of John A. and Mary E. Wilcox Alvord); **John A. ALVORD**, 226 (b. 1864, son of John A. and Mary

E. Wilcox Alvord); **John A. ALVORD**, 226 (m. Mary E. Wilcox 1862 in State Line, NY; d. 1868); **John Abel ALVORD**, b. 1826); **Martha ALVORD**, 226 (b. 1820; m. Henry Baldwin 1841); **Mary Banks ALVORD**, 226 (b. 1812; d. 1819); **Mary Banks ALVORD**, 226 (b. 1865, daughter of John A. and Mary E. Wilcox Alvord); **Nehemiah Banks ALVORD**, 226 (b. 1787; m. Rana Sherwood 1811); **Nehemiah Banks ALVORD, Jr.**, 226 (b. 1822; d. 1824); **Sarah Wakeman ALVORD**, 226 (b. 1866, daughter of John A. and Mary E. Wilcox Alvord).]

• Owen, William Arthur. *JOHN OWEN OF WINDSOR, CONNECTICUT AND SOME OF HIS DESCENDANTS*. No publication data. [We have p. 691, which lists the family of Elijah Owen, repeating the information given in Owen, *Descendants of John Owen of Windsor, Connecticut (1622-1699)*, except Rebecca Owen's husband is correctly called "Benedict Alford."]

New York

• Coons, William S. "The Tibbitts or Tibbetts Family: Descendants of George Tippet of Yonkers, NY." *NEW YORK GENEALOGICAL AND BIOGRAPHICAL RECORD*, Vol. 51, No. 1 (Jan 1920). [Transcription typed by Pamela Thompson: Mr. _____ ALVORD, 72 (m. Johana Reynolds, who was b. in 1795, the daughter of Ely and Hester (Vermilye) Reynolds. They had five children: Isaac, John, Jades, Henry, and Hettige. No places were given.)]

Pennsylvania

• Palmer, Lewis. *A GENEALOGICAL RECORD OF THE DESCENDANTS OF JOHN AND MARY PALMER OF CONCORD, CHESTER (NOW DELAWARE) CO., PA. In Two Divisions—Palmer-Trimble, Palmer Division*. Delaware Co., PA: Press of Chester Times, 1910. [Title page and the following page that lists Alfords: **Newell Gilder**, 353 (b. 1887, son of Reuben); **Reuben Gilder**, 353 (b. 1849, m. Mary Ellen Dubree 1877, lived in Philadelphia); **William**, 353 (father of Reuben).]

Vermont

• Greene, Walter and Ella. *THE GREENE FAMILY OF ST. ALBANS, VERMONT*. Published in 1964. [The following pages that list Alfords and variations: **Amni**, 158 (son of Benedict Alford 1757-1838); **Ashley [sic]**, 40 & 158-159 (incorrectly listed as father of Susan); **Benedict**, 158 (appears in Manchester, VT, proprietors and land records in 1773, 1775, 1764, and 1786, the only Alford entries in early Manchester records; DAR records state that he served in the Revolution, was b. in Windsor, CT, d. in Troy, NY); **Susan**, 40 (b. 26 Feb 1774, daughter of Ashley [sic], from Manch-

ester, VT, m. Nathan Green 1791—his partial biography pp. 40-43), 43 (had fourteen children, d. 9 June 1866, buried in Greenwood Cemetery in St. Albans), 158-159 (discussion of her parentage); **Benedict ALVORD**, 158-159 (as listed in *The History and Genealogies of Ancient Windsor*: b. 1688, son of Jeremy and Jane Alvord, m. Abigail Wilson; b. 1716, son of Benedict and Abigail Alvord, m. first in 1744 to Jerusha Ashley and second in 1761 to Rebecca Owen, d. 1764 [sic]; b. 1757, son of Benedict and Jerusha Ashley); **Benedictus ALVORD**, 159 (m. 1640 to Jane Newton, d. 1683) **Jeremy ALVORD**, 159 (b. 1655, m. Jane Hoskins, d. 1709).]—see NOTE following Greene, *Supplement to the Greene Family of St. Albans, Vermont*

• Greene, Walter and Ella. *SUPPLEMENT TO THE GREENE FAMILY OF ST. ALBANS, VERMONT*. N. p.: N. pub., 1969. [Title page and the following pages that list Alford and variations: **Ashley**, S121 (on 1800 Census living in Swanton, VT); **Benedict**, S120 (from a search of Manchester, VT, records in 1961 by Grace W. Reed: Land Records, Vol. 2, p. 147—of Manchester, Charlotte Co., Province of New York, sells land in Manchester with Connecticut money in 1775, witnessed by **Reabeah** [sic] Alford and **Anna Alford**, recorded in Manchester 1787; Land Records, Vol. 2, p. 105, of Rutland, Rutland Co., VT, buys land in Manchester, 1786, recorded 1786), S121 (on 1790 Census living in Georgia, Chittenden Co., VT); **Susan**, S121 (as found on a typed sheet in a trunk: m. Nathan Greene, handwritten in ink: b. in Skenesborough, NY); **Asher ALVORD**, S121 (in VT in 1780).]

NOTE: In a column called, "Corrections to Genealogies in Print," p. 71, *NEHGS Nexus*, Vol. VI, No. 2, corrections to *The Greene Family of St. Albans, Vermont* and *Hathaways of America* are printed. Following is the complete text of the correction:

In *The Greene Family of St. Albans, Vermont* . . . p. 40, the author has a question on the parentage of Susan ALFORD, who married Nathan GREENE: Susan ALFORD is the sister of Rebecca ALFORD who married Alfred HATHAWAY, according to Susan's affidavit in the Revolutionary War pension application files. On March 17, 1840, Susan GREENE states that she is age 66, living in St. Albans, and a sister of Rebecca Hathaway, whose maiden name was Rebecca Alford. The letter is in the file of Rebecca Hathaway, widow of Alfred Hathaway, applying for pension benefits. Another file, that of George ALFORD, has a letter from Rebecca stating that she is his sister. Additionally, brothers Oliver and Benedict have letters in the George ALFORD file. They are all children of Benedict ALFORD, and Rebecca OWEN is the mother of all but Benedict. Other siblings (but not Susan) are listed in R.D. Owen, *Descendants of John Owen of Windsor*,

Connecticut (1622-1699) (1941), p. 75. Regarding the name "Benedict," I also had difficulty finding Rebecca Hathaway's father because in *Hathaways of America* (1970 edition), p. 185, Rebecca is stated as being the dau. of Olaf ALFORD. Evidently he did not like the name Benedict.

For anyone else related to Alfred & Rebecca (ALFORD) HATHAWAY, I have further corrections to the volume above: Alfred & Rebecca moved to Porter, New York, ca. 1822, where Alfred died in 1829, not to St. Albans as the book states. Also, Rebecca made a pension affidavit in 1844 and was still living in 1850 in Porter, New York, age 88, per the 1850 census, where she is listed in the household of her sister [sic] Pauline (HATHAWAY) Fisher. - Submitted June 9, 1988, by Kathy Beals, 601 Madison, Albany, CA 94706

• Versailles, Elizabeth Starr. *HATHAWAYS OF AMERICA*. Northampton, MA: Gazette Printing Co., 1970. [Title page and the following pages that list Alford: **Olaf**, 185 (father of Rebecca, served in Revolutionary War less than 6 months); **Rebecca**, 185-186 (b. St. Albans, VT 3 Oct 1762, daughter of Olaf Alford, m. Alfred Hathaway 1783 in Rutland, VT, d. 6 Feb 1840 in Porter, NY, had eleven children: Philena, Elijah, Rebeca, Olaf, Nora, Lucretia, Alfred, Clarinda, Paulina, Lucy, Olive).]—For further information on this family, see Owen, *John Owen of Windsor, Connecticut and Some of His Descendants*, under Connecticut Family Histories, where Olaf, Rebecca's father, is correctly called Benedict; see also NOTE following Greene, *Supplement to the Greene Family of St. Albans, Vermont*

Virginia

• Blanks, James Rightman. *BURROW FAMILY HISTORY*. Decorah, IA: Anundsen Publishing Co., 1986. [The following page that lists Alford, transcription copied by Alicia Roundy Houston: **Wm.**, 336 ("Lower Norfolk County, 4 Jan 1671/2, Wm. ALFORD died and having no heirs the land was divided and given to others including Benony Burrows.")]



Part Five of J. Alford's Alford Family Notes

THE ALFORDS OF SUSSEX, LONDON, AND HERTFORDSHIRE.

The connection of the Alford family with the county of Sussex is of very early date, Richard, lord of Aldford in Cheshire, in 1200, having "held the Manor of Newton in the county of Sussex"; while the *Sussex Archaeological Collections* mention Adam Alford among the "armigeri" of that county who fought at Agincourt in 1415; but the line now to be traced came into the county at a later date, being descended from the second of Thomas Alford and Jane Salisbury his wife, of Holt. See Table I.

We therefore commence with:

1. Robert Alford, of London, and of Erbistock in Flintshire, not far from Holt and Aldford (which property he purchased from his uncle Richard Alford), was the stockfather of the Sussex and Hertfordshire families. He married Anne, daughter of Edmund Brydges of Sudeley, Gloucestershire, thus forming a connection between the Alfords and that well-known and distinguished family of Brydges of Gloucester and Somerset. (A pedigree of "Brydges, with descents of Alforde" is given in the British Museum MS, Harl., 1160, 101b, and in 1156, 49 and 49b; and it may be observed that the living of Weston Zoyland, in Somersetshire was in the gift of Brydges family, and was afterwards held by the Somerset Alfords, who also had a connection with Brydges through the Somerset and Gloucestershire family of Symes.)

Robert Alford had four sons:

- i. Roger, through whom this branch continued, and of whom next (2).
- ii. Francis [information follows later].

- iii. Edward [information follows later].
- iv. Launcelot [information follows later].

Robert Alford died in 1546, leaving his lands in Flintshire to Anne his wife. His will in abstract follows:

Robert Alforde of London, 1546, January 14. "Hole of mynde but sicke of bodie thanks be unto Almightye God. . . . To be buried in the Parishe Church of St. Swithyne in London. . . . Goodes and Cattalls" to be divided into three equal portions, one portion to his wife Anne, sole executrix. "My landes and tenements, meadows and pastures in the parishes of Norton Madok and Tyrby Stoke [i.e. Erbistock], in Flintshire, bought of Richard Alford, to Anne my wife." . . . "My brother William Sumner." . . . "Brother William Dummer, overseer."
—P.C.C., 26 Alen.

In the "examination of William Seth before the Lord Great Master, the Lord Privy Seal", etc., mention is made several times of "Anne Alford of London, widow of Robert Alford, and daughter of Edmund Brydges of the Chandos family". —Cecil MSS., Part I, p. 83, etc.

2. Roger Alford, of London, and of Hitcham, Buckinghamshire, was the oldest son of Robert Alford and Anne Brydges. He married Elizabeth, daughter of Thomas Ramsey, esquire, and widow of John Clarke, esquire, of Hitcham, Buckinghamshire. By this marriage he had two surviving children:

- i. Edward, of whom hereafter (3).
- ii. Anne, who married Sir Edmund Fettyplace, the head of a prominent Berkshire family. She had no less than twelve sons and seven daughters.

Roger Alford entered into political life as Secretary to Sir William Cecil, afterwards Lord Burleigh, who was made Secretary of State by Queen Elizabeth immediately after accession in 1558, being added, with others, to the former Catholic Ministry of Queen Mary, as "known to be inclined to the Protestant Communion," and was actually called "a heretic" by his Roman Catholic opponents. We may therefore conclude that Roger Alford was of similar views, and his career must have been one of deep interest.

The Cecil MSS., Part I, p. 485, refer to a letter from Roger Alford to Sir William Cecil, afterwards Lord Burleigh, respecting Lady Jane Grey. Dated 13 Nov. 1573.

Letter from Roger Alford to the Lord Treasurer. (Lansd. MSS., xvii, 26):-

My Verie good Lorde,

You maye see I am here still to trouble you for the consideration of my brother's [Launcelot Alford, who was "Clerk of the Hanaper" in Dublin, and now became "Teller" in accordance with the request of this letter] cause in his absence. His suit is to have the Office of the Tellership of Ireland granted to him by My Lord Deputy, in consideration of his long service there, these 25 yeares past, etc., etc.

Your Lordship's ever to command,



Roger Alford's signature appears also in the State Papers, 102, Foreign, Eliz., 1564 to 1565, no. 791, p. 243.

Letter (Cecil MSS., II, 124) from

(Continued on p. 24)

Alford Family Notes, cont. from p. 23)

*Roger Alford to Lord Burghley:
Mr. Redeman, the bringer of
this, married my cousin on my
mother's side. The gentleman is
thought in this Shire of as good
fame as any of his calling in it. He
is desirous that, by your
Lordship's favour, he may try out
the practise, wherein I pray you to
let him have your aid.
Hitcham, DEC. 14, 1575.*

Roger Alford's connection with Hitcham, near Maidenhead in Buckinghamshire, was evidently through his marriage. He retired thither, and at his death in 1580 was buried there. His monumental inscription in Hitcham Church reads thus:

Arms:—Gules, six pears, three and three.

“Here lieth buried

Roger Alford of London,
and late of Hitcham, Esquire,
who married Elizabeth Clark, widow,
and daughter of Thomas Ramsay,
Esquire.

He died the 16th of July, 1580.”

The British Mus. Addit. MSS., 22,583, f.52b, contains the following Latin Verses in memory of Roger Alford, 16th century, by William Cager, Student of Christ Church, Oxford:

“In obitu Rogeri Alfordi

“Rogerus tumulo Alfordus sepelitur in isto:

Quid? tantam cohibet tantula terra virum!

Non jacet hic totus, passim bona fama vagatur

Libers, nec modica contineatur humo.
Altera para meliorque sui jam vivit in astris,

Sic tantum corpus jam brevis urna capit.”

Roger Alford was a member of parliament for Bletchingley in 1558, and for Preston in 1559.

The following is a brief abstract of his will:

Roger Alford of Hitcham, Bucks, 1580. To be buried at Hitcham. Mr. Bridge my grandfather, brother of Sir John Bridge. My wife Elizabeth. Edward Alford my sonne. My daughter Anne. Estate at Weston, Oxford. Houses in Fleet Street London which descended to me from my father, to Thomas Alford and his son. Launcelot my brother, Francis my brother.
—P.C.C. 38 Arundel.

The Burghley MSS., temp. Elizabeth, 1580, Lansd. 109, 99, p. 217, contain the following in continuance of his will:

The wordes of Mr. Alfordes Wyll conveying his desire to have his sonne Edwarde Alford placed in service with my Lords Treasurer. Item. I wyll that my sonne Edward contynu his studie at Oxforde untill he be 17 or 18 years of age; and then I would have him sitte in Lynncoln's Inne. . . . Also my desire is when he shall growe to twentye yeares of age, that he should seek my Lorde Treasurer, my olde Mr., who I truste wyll accept hym, and notwithstanding permitte hym to contynue his studye at the Lawe.

A letter (Lansd. MSS., lxxx, 209) from Elizabeth Alford, widow of Roger Alford, is preserved concerning a “cause between Matthewe Lowe, plaintiff, and Elizabeth Alford, defendant, about certaine grounde called the Marshes in the Manor and Parish of Hitcham.” June 28, 1596. It bears her autograph.

Eliz alford

Her will follows in abstract:

Elizabeth Alford of Hitcham, Bucks,

widow, 1598. “To be buried near my husband Roger Allford, esq., in the chancel of the parish Church of Hitcham. Lands in Hitcham . . . and Taplow . . . Little Marlow. Sir Wm. Clarke Knt. my eldest Sonne. . . My sonne Edward Alford. My daughter Lady Russell. . . my daughter Fettiplace. . . my cousin John Alford. . . my Godson John Alford.” —P.C.C. 103 Lewyn.

Before continuing the direct line of Robert Alford it will be convenient to deal with the three younger sons in succession.

Francis Alford, the second son, was born about 1530. He passed through the University of Cambridge, taking his B.A. degree, and then migrated, in 1550, to Christ Church, Oxford, “for the study of the law.” Here he took his M.A. in 1552. He was a proctor in the Vice-chancellor's court in 1554, and a “clerk of the market,” which office he resigned in February 1555. He qualified for the D.C.L. in October 1560, but there is no record of his admission to the degree. In 1568 and several succeeding years he had a seat in the House of Commons, sitting in 1585 and 1588 as representative for East Grinstead, co. Sussex. In the Record Office State Papers he is mentioned in 1570 as “of Salisbury Court, Fleet Street.” In 1571 a Bill in Chancery was entered by “Francis Alford of London” concerning the conveyance of the manor of Ashton-sub-Edge, Gloucestershire, and after a long law-suit he was successful. In 1557 there is mention of the “conveyance” from Francis Alford to his brother Roger Alford of this manor of Ashton-under-Edge, Gloucestershire.

In 1581 “some lands at Burton Lazar, forming part of the Manor of Melton Mowbray, were demised to Francis Alforde.” In 1587 he was a Justice of the Peace for York. In 1588, Francis Alford wrote to Lord Burghley. His kinsman John Alford solicits the

(Continued on p. 25)

(Alford Family Notes, cont. from p. 24)

Collectorship of St. Mary's York.

"Deed of sale from Francis and Edward Alford (his brother) to Nicholas Portar, of the mansion house of Ashton-sub-edge." Francis Alford is afterwards described as of Lambourne, Berks, esquire, and was trustee and supervisor of an almshouse at Lambourn in 1589, being succeeded in that office by Henry Alford of Wokingham, doubtless his son. "The hospital or almshouse at Lambourne, Berks, is for ten poor men." In 1589 it was determined that Francis Alford, esq., his heirs and assigns, should have the management of the estates as the representative of the founder. In 1619 Henry Alford of Wokingham conveyed the Supervisorship to Richard Organ.

(The Wokingham Registers unfortunately only go back to 1660.)

The State Papers of 1590, August 12, record the grant of presentation to Francis Alford of the dignity of Preceptor, with the Prebend of Empringham, in Lincoln Cathedral.

Many letters of Francis Alford, from 1573 onwards, are extant, mostly addressed to Lord Burghley.

In the *Reports of the Historical MSS. Commission*, vol. xci, p.126, is given part of a speech in Parliament of "Sir Francis Alford" probably in 1568, with reference to an "Acte concerning Marie, daughter of James V", i.e. Mary Queen of Scots.

"I think of her to be as vile and naughtie a creature as ever the earth bare, yet can I not see howe it can stand with the honor of England either to condemne her unheard, or to towche her in life, for that she never knew of."

Some references in the volume of Parliamentary History may be noted:

3 Eliz., Oct. 30, 1568. A committee of both houses appointed to petition the

Queen (Elizabeth) "That it would please your Majestie to dispose yourself to marry" included Sir William Cecil [Lord Burleigh, whose Secretary was Roger Alford], and Mr. [i.e. Francis] Alford. "Her Majestie commanded the committee to make their appearance before her. . . and gave them a smart reproof." —Vol. I, 709.

April 14, 1571. Debate on a Bill against Licenses and Dispensations. "Mr. Alford spoke against the Bill, and endeavored to prove that Licenses for Marriage in some case might be needful, and that Dispensations for non-residence might upon some occasion be of great necessity", etc. —Vol. I, 747.

April 19, 1571. Debate on a Bill for the Validity of Burgesses not reslant. "Mr. Alford reasoned to this effect, that above all things necessary care ought to be the chusing and having of fit men to supply the place, that there be not imperfection. . . He would that none should be of that house not of 30 years of age at the least. And for the choice of townsmen, he was of his mind that Moses and Aaron should be conjoined together, and that there should be one of their own, or some gent. near them, who had knowledge of the state of the country, and the other man learned and able to utter his mind and opinion; so that he seemed to conclude that the law should be in force for the one Burgess, and at liberty for the other." —Vol. I, 754.

Strype's Annals. VOL iii, pp. 465 and 625, speak of Francis Alford, who in 1587 was J. P. for York, and is presumably to be identified with this Francis Alford. His mother was, in 1580, summoned before the Recorder of London for having mass performed in her house in Salisbury Square.

[This chapter will be continued in the next issue of AAFA ACTION.]

The International Genealogical Index

By Kenneth M. Alford
IGI Project Officer

One of the most convenient and most used sources of genealogical data is the LDS (Mormon Church) International Genealogical Index or IGI.

AAFA has just arranged to obtain a hard copy, for the cost of reproduction, of all the "Alford" pages in the current (1988) version of the index. To the extent that space will permit, a printout from a different state will be in each issue of this newsletter. This month we are publishing the Alabama IGI for Alford—see the following two pages. Action is under way to obtain a similar list for the British Isles.

The index contains information on adult christening, birth, death or burial, marriage, census, wills, etc. The majority of the data pertains to marriage and birth records. The sheets currently on hand cover the "Al" spellings, but not the "Ol" variations. If there are any, they will be covered later.

For marriage entries, the birth date has been estimated to be 20 years prior to the marriage to give an order of magnitude entry for the birth. It has been assumed that the birth was in the same state as the marriage but the "???" cautions the reader that the state may not be correct.

If you would like to have a xerox copy of the nearly 150 sheets we acquired from the LDS library, they may be had for \$13 to cover the cost of reproduction, packaging and mailing. Make the check to AAFA and send it to the Missouri post office box. The cost for separate states will vary depending on the number of pages. For the cost for a given state, write the Missouri office and specify the state.

Alabama Alfords in the IGI

The list below includes all Alfords/Alfreds extracted from the 1988 LDS International Genealogical Index. When parents were included in the IGI record, they are listed below the indexed person.

NAME (ALFORD UNLESS SPECIFIED)	BIRTH DATE	BIRTH PLACE	SPOUSE	DATE MARRIED	PLACE MARRIED
JESSE ALFRED	1861E	AL ????	DAVIS, ANDREW	18811024	AL TALP
LEVINIA ALFRED	1799E	AL ????	RHYNUS, JOHN	18190210	AL MADI
LOUISA J. ALFRED	1830E	AL ????	CRYER, ALFRED	18500801	AL MORG
MARTHA ALFRED	18630815	AL STCL			
MARTHA ALFRED	1861E	AL ????	BEESON, JOHN WALTON	18810223	AL STCL
ADELINE C.	1827E	AL ????	BRYANT, JOSEPH H.	18470112	AL GREE
AMY	1846E	AL ????	RAINY, HENRY	18661005	AL TALP
C. F.	1819E	AL ????	SNOW, MARY ANN	18391107	AL JEFF
CHARLES CARROLL	18830907	AL HOUS			
<i>Parents: ALFORD, JAMES BADGER and ROBINSON, SARAH ELIZ</i>					
COLUMBUS W.	1851E	AL ????	GLOVER, MARY A. D.	18710917	AL TALP
CORNELIA FRANCES	18440715	AL BALD	ALFORD,		
ELIZABETH	1823E	AL ????	WEBB, WILLIAM H.	18430709	AL MADI
FRANCES	1839E	AL ????	NICKOLS, DANIEL D.	18590811	AL TALP
FRANCES J.	18450320	AL MONT			
<i>Parents: ALFORD, LEVEN E. and DERRICK, CHARLOTTE</i>					
GEORGE C.	1845E	AL ????	CLAYTON, LUCINDA	18650710	AL TALP
GEORGIANNA	18500127	AL MONR			
<i>Parents: ALFORD, WILLIAM B. and SNOWDEN, SARAH ANN</i>					
HARRIS E.	18450427	AL MONR			
<i>Parents: ALFORD, WILLIAM B. and SNOWDEN, SARAH ANN</i>					
HENDERSON H.	1828E	AL ????	WHITEHEAD, CATHERINE	18481122	AL GREE
HILLIARD JUDGE	18371230	AL MONT			
<i>Parents: ALFORD, LEVEN E. and DERRICK, CHARLOTTE</i>					
JACOB WESLEY	18470201	AL MONT			
<i>Parents: ALFORD, LEVEN E. and DERRICK, CHARLOTTE</i>					
JAMES BADGER	18780511	AL HOUS			
<i>Parents: ALFORD, JAMES BADGER and ROBINSON, SARAH ELIZ</i>					
JAMES BRINK	18900812	AL COVI			
<i>Parents: ALFORD, HENRY and _____, GRACE</i>					
JAMES BRINK	19080812	AL COVI			
<i>Parents: ALFORD, HENRY and _____, MARTHA</i>					
JAMES E.	1858E	AL TALP	SMITH, MARGARET R.		AL TALP
JAMES J.	1849E	AL ????	THOMPSON, CINTHIA M.	18690503	AL TALP
JAMES J.	1840E	AL ????	CHRISTIAN, MARTHA C.	18701206	AL TALP
JAMES Z.	1847E	AL ????	REEL, MARY A.	18671124	AL TALP
JANY	1791E	AL ????	CLAUND, BARNETT	18110413	AL MADI
JANY	1791E	AL ????	BARNETT, CLAUSSIDE	18110413	AL MADI
JOHN B.	1797E	AL ????	BAILEY, TEMPERANCE	18171021	AL MADI
JOHN H.	1811E	AL ????	LAWRENCE, MALINDA	18310825	AL MORG
JOHN H.	1819E	AL ????	BARNES, MARY E.	18390725	AL GREE
JOHN H.	1832E	AL ????	WILLIAMS, MARGARET	18520809	AL GREE
JOHN P.	1845E	AL ????	SOLOMN, MARTHA A.	18650404	AL MONR
JOHN WILLIAM	18350910	AL MONT			
<i>Parents: ALFORD, LEVEN E. and DERRICK, CHARLOTTE</i>					

NAME (ALFORD UNLESS SPECIFIED)	BIRTH DATE	BIRTH PLACE	SPOUSE	DATE MARRIED	PLACE MARRIED
LEVEN E.	1814E	AL ????	DERRICK, CHARLOTTE	18341011	AL MONT
LUCRETIA	1856E	AL ????	JOHNSON, HENRY M.	18760815	AL TALP
LULA	1864E	AL ????	TUCKER, JEFFERSON	18841231	AL TALP
MARTHA	1799E	AL ????	BROOKS, JEREMIAH	18190113	AL MADI
MARTHA K.	1844E	AL ????	RUDDER, WILLIAM H.	18640120	AL MONT
MARY ANN	18400428	AL MONT			
<i>Parents: ALFORD, LEVEN E. and DERRICK, CHARLOTTE</i>					
MINNIE SAVANNAH	18880214	AL ESCA			
<i>Parents: ALFORD, ROBERT L. and GRIFFIN, LULU</i>					
NANCY	1791E	AL ????	ROBERTSON, JAMES	18110518	AL MADI
NANCY [LUCY] ANN	1810E	AL ????	RHODES, JACOB	18301005	AL MORG
NANCY C.	18460402	AL COFF			
<i>Parents: ALFORD, TURNER and MOORE, ELIZABETH C.</i>					
NANIE CLARK	1870E	AL ????	GOODE, JOHN EDW. M.	18900420	AL STCL
TOMMY	1870E	AL ????	GOODE, JOHN EDW. M.	18900420	AL STCL
NATHANIEL JEFF.	18610814	AL MOBI			
<i>Parents: ALFORD, REDDING and HARRISON, NANCY</i>					
PEACHMAN J.	18410912	AL MONR			
<i>Parents: ALFORD, WILLIAM B. and SNOWDEN, SARAH ANN</i>					
REBECCA E.	1818E	AL ????	COLEMAN, ROBERT E.	18380220	AL GREE
REBECCA T.	18510108	AL COFF			
<i>Parents: ALFORD, TURNER and MOORE, ELIZABETH C.</i>					
ROBERT L.	1860E	AL ????	GRIFFEN, LULA P.	18801107	AL ESCA
SARAH	18430707	AL MONR			
<i>Parents: ALFORD, WILLIAM B. and SNOWDEN, SARAH ANN</i>					
SILL WALKER	18721224	AL MONT	ALFORD, SYLVANUS W.		
SILL WALKER	1872E	AL ????	RUDDER, SARAH JANE	18921227	AL MONT
SYLVANUS/SILLVANI	18961109	AL MONT			
<i>Parents: ALFORD, SILL WALKER and RUDDER, SARAH JANE</i>					
SUSAN	1855E	AL ????	SANDERS, BENJAMIN G.	18751223	AL STCL
SYLVANUS WALKER	18421014	AL MONT			
<i>Parents: ALFORD, LEVEN E. and DERRICK, CHARLOTTE</i>					
SYLVANUS WALKER	1841E	AL ????	BLACKBURN, MARTHA	18611001	AL PIKE
SYLVANUS WALKER	1850E	AL ????	REYNOLDS, ELIZA	18700808	AL MONT
SYLVANUS WALKER	1854E	AL MONT	DAVIS, MARY	18740507	AL MONT
THOMAS ROBINSON	18711109	AL HOUS			
<i>Parents: ALFORD, JAMES BADGER and ROBINSON, SARAH ELIZ</i>					
WILLIAM	1837E	AL ????	CHAPMAN, JANE	18571204	AL RUSS
WILLIAM B.	1820E	AL ????	THAMES, SARAH ANN	18401110	AL MONR

Coming in the March Issue

- Alfords in the 1860 Federal Census of North Carolina
- Report on Wills and Estates of North Carolina, by Franceine Rees
- How to Qualify for the DAR, by Lucy Shull Stevens, Member #94
- Many biographies, Alfords in the News, and obituaries
- Words and music by Burns Alford, father of Robert Alford, Member #207
- Much more!

Reports from the States

State organizations are beginning to be formed, and a few are quite active. We'll try to cover the states in each issue as activity in them seems to merit mention. Every state mentioned will not necessarily have a state organization or state representative.

Most of the following reports were prepared by the AAFA ACTION staff. Most future reports will come from the state representatives and officers.

Where there are state organizations or representatives, they have been supplied an AAFA notebook for that state. It will be obvious that some of

the "notebooks" will soon grow to a library of several volumes. The notebooks contain, or have space provided for, such things as membership, officers, prospects, all kinds of genealogical records and data, "Alford" publications, state member ancestor tables, family group records & biographies, lineages, research resources, publicity outlets, cemetery records, court records, corporate papers, etc. These notebooks will serve as the focal point for state work- being used to: encourage membership, assist persons with their Alford ancestry, determine what research is needed, etc. When the Association meets annually, it is hoped

the state representative or an associate will be present with the book, and during a period provided for that purpose will be available for consultation with members interested in Alford's of their state.

ALABAMA

We do not have a state representative designated for Alabama yet although it will probably eventually be one of the more active states. Alabama ranks eighth nationally in Alford population, but as of the end of October there were only four members in Alabama, and two of those are new members. We do have one active participant in Montgomery, Ron Head, who is not a member but has contributed significantly with Alabama Alford information. A new member, added just this month, is attorney Ben Spratling III, who has offered to write an article for publication.

ARIZONA

Mrs. Jean H. Brown of Tucson is the AAFA representative for Arizona. She and her husband, Dr. Chester J. Brown, attended the meeting in Houston. Although Arizona ranks about 28th with an estimated Alford population of 150 persons, Jean plans to put Arizona on the Alford map. We won't find many early Alford ancestors in Arizona, but as one of the nation's retirement communities, there should be many candidates for membership—Jean has been working on those. George G. Miller of Phoenix is a recent addition to our membership, and he is anxious to get his computer system busy working on Alford data. You'll be hearing more about him in the months to come.

COLORADO

Colorado is another state with rela-

TEXAS CHAPTER OFFICERS

VICE-PRESIDENT

D. L. Alford, Jr.
709 W. Buck St., Caldwell, TX 77836

GENEALOGIST

MRS. LUCILLE MEHRKAM
1070 Gardenia, Houston, TX 77018

SECRETARY

MRS. PATRICIA FITE
11938 Longleaf, Houston, TX 77024

PUBLICIST

JAMES POSEY ALFORD
205 S. Patrick, Gonzales, TX 78629

STATE REPRESENTATIVES

(States without organizations)

ARIZONA

MRS. JEAN H. BROWN
10050 Karen Place, Tucson, AZ 85748

LOUISIANA

MRS. SALLY STOEWER
13219 Ouachita St.
Baton Rouge, LA 70818

COLORADO

JOE B. ALFORD
112 Miramar Drive
Colorado Springs, CO 80906

MISSISSIPPI

MRS. RUBY ALFORD HEARD
P. O. Box 10144
Jackson, MS 39286

FLORIDA

WILLIE M. ALFORD
3311 33rd Street, Court W
Bradenton, FL 34205

VIRGINIA

W. JOSEPH ALFORD, JR.
309 Beechmount Drive
Hampton, VA 23669

GEORGIA

MRS. DELORES M. THRASH
P. O. Box 365, Rutledge, GA 30663

tively little Alford "history," ranking 25th with about 200 Alford. Joe B. Alford and his wife, George Marie, were at the meeting in Houston, and Joe agreed to be the Colorado state representative. His Colorado outreach effort was mentioned in the previous newsletter. In addition to Joe and George Marie, our Colorado membership at this time consists only of Dr. and Mrs. C. Wylie Alford and Mr. and Mrs. Glen Holmes.

FLORIDA

Willie M. Alford of Bradenton is the Florida state representative. He has been very busy doing all types of work in Florida, which ranks second or third (almost a tie with California) with an estimated Alford population of 1625. There is some Alford "history" in Florida—particularly in the northern counties. The earliest known Alford in Florida was Fort Alford enumerated in Leon County in 1830.

At the end of October there were 16 Florida members, and one has been added since. Willie's son, William M. Alford, Sr. of N. Ft. Myers and new member Eubie Alford are willing to help with our Florida work. Rev. Charles H. Alford, who recently retired from the ministry, also wants to help with AAFA work.

Florida members attending the meeting in Houston were H. Harold Alford and his son Victor Alford. Much work remains to be done in Florida before the Association meets there in 1992.

GEORGIA

Georgia has its first AAFA representative. Delores Thrash of Rutledge has consented to take on the job. Georgia ranks about seventh with an estimated Alford population of 960. We have fifteen members in Georgia, including our President and Secretary. Others in Georgia who have offered to help are Dr. James M. Edwards and another

Houston attendee, Eleanor P. Alford. Even though we met in Georgia in 1988, much work remains to be done there. There was an Alford presence in Georgia in the late 18th century and there has been a strong Alford influence there ever since.

LOUISIANA

Sally Stoewer of Baton Rouge was AAFA's first state representative. The state ranks fifth with an estimated Alford population of 1350. At the end of October Louisiana had 33 member families. Sally and her husband, Dick, were present at the Houston meeting, as were several other members from Louisiana. They included Murray L. Alford, Jr., his wife Mary (and son Gregory W. Alford with wife Sharon of Houston); LTC Walter W. Alford (and his brother Milton of Pearland, TX); Oliver S. Robinson III; Judge Steve A. Alford, Jr. and his wife Kate; and Oscar Alford, wife Dorothy and daughter Shelly Alford Close. Member Jack Kinabrew of New Orleans has undertaken what has to be the most progressive cemetery effort thus far. (See separate cemetery report). Jack and his wife Eileen could not make it to the meeting in Houston because of a previous commitment in Ireland.

At the meeting Judge Steve Alford promised to help Sally in the effort to make Louisiana one of the leading AAFA states. Oliver Robinson has also agreed to do some Louisiana work when he can.

MARYLAND

The most recent appointment of an AAFA state representative is in Maryland, where Henry G. Alford of Baltimore has agreed to take the job. Maryland ranks 22nd with an estimated Alford population of 225. Membership there at this time consists only of Henry, DAR project officer Lucy Shull Stevens, and her mother, honorary lifetime member Mrs. Lewis O.

(Tressie) Bowman. We do have some Alford "history" in Maryland. There is a record of several Alford's being "transported" to Maryland in the mid 1600's.

MISSISSIPPI

Who better for a Mississippi state representative than Ruby Alford Heard?! She consented last month to take on this job although she has been "acting" in something like that capacity for years. There is little doubt that she knows more about Mississippi Alford's, and many other Alford's as well, than anyone. At the present time Ruby and her husband, Bob, manage an apartment complex, and their ability to leave home for any time is restricted, but that should not hamper her work as the state rep. Mississippi ranks sixth with an Alford population of about 1350. We currently have 19 family members in Mississippi including AAFA treasurer Julius M. Alford. Julius and his cousin, Elizabeth Alford Williams, were Mississippi members present in Houston in October. Dr. David A. Schultz of Lucedale, MS, has offered to help with Alford research. A recent new member in Mississippi is Earsel K. Alford Bender and her husband Don.

Mississippi should be ready for us when the Association meets there in 1991.

NORTH CAROLINA

Although our plans are to meet in North Carolina next year, we do not have a state representative there yet. Our AAFA Genealogist, Bill Mitchiner, and Wills & Estates Records project officer, Franceine Rees, live in North Carolina and have their handsful with those jobs. Although North Carolina ranks fourth with an estimated Alford population of 1400, we have only eight member families there. About half of the present AAFA members had North

(States, cont. from p. 29)

Carolina ancestors. Maybe they should be trying to enlist some of their distant cousins still residing in North Carolina!

Much work must be done quickly if we are to have a successful meeting in North Carolina in 1990.

TEXAS

What a welcome we had in Houston!—thanks to the Texas delegation. Leading the nation with an estimated population of 3125 Alford's, it also leads in membership with 77 member families at the end of October. It is the only state with a full AAFA organization. D. L. Alford, Jr. is the Vice President for Texas, Pat Fite is the Texas Secretary, Lucille Mehrkam is the Texas Genealogist, and J. Posey Alford is the Texas Publicist. The Alford presence in Texas goes back to the early 1800's, and General George G. Alford, Quartermaster General in Sam Houston's Army, served in the battle for Texas independence. Other Texas members who have volunteered to help with Alford research or recruitment are Andrew Leath, Betty Wagstaff, Bryant J. Alford, Janice Smith, Kenneth M. Alford, Geraldine Graves, and Rev. Dr. T. Wayne Robinson.

D. L. is working on a January planning meeting for his Texas Officers. With much Texas work now behind them, they are looking forward to learning still more about Texas Alford's, making the Association's Texas presence better known, involving more Texas members in AAFA work, and recruiting more Texas members.

Members attending the 1989 meeting in Houston from Texas were Nancy E. Alford and children; Janice S. Smith and husband John; Frances A. Spicer; Harold Glen Alford and wife Freda; Landon Alford and wife Phyllis; Bess Rayford and friend Ruth Green; Mariwynn Watson and husband

Russell; Bryant J. Alford and wife Mary; Hollis W. Alford and wife Arlene; Lynette Jester; Kenneth M. Alford and wife Darlene; Dr. Mary Lee Alford Hodnett, Gerald T. Alford; Rev. Douglas L. Alford and wife Shirley; Robert B. Alford and wife Maxine; Betty Alford Davis; Richard Wayne Alford and wife Ruby; William J. Alford and wife Jeweleen; Lucille Mehrkam and husband W. B.; Louise Alford and Kerry; Pat Fite; Harold Alford; Jann Alford Harper; Robert L. Alford Jr. and wife Mary; Dovie Jean Alford; Mary Alford Mischer, husband Walter M. and their granddaughter; Patsy Alford Stratton and husband Richard; James P. Alford and wife Nina; Gerald Alford and wife Margie; Carroll Alford and wife Shirley; Katherine Black; Robert A. Alford Jr. and wife Marian; Ernestine L. Jackson; Roy L. Alford and wife Susan & infant; Rose Alford Shelton, husband Steve, infant daughter Molly Beth and sister Twila Gibson; Robert P. Coyner Jr.; Vesta Alford Giddings; Paul C. Murphy and wife Lillian; Jim Alford, wife Kathryn and children; Lee Alford III and wife Mary; D. L. Alford Jr. and wife Catherine; J. P. Alford; Dr. Mark Alford and wife Patricia; Jim Alford wife Glenda and children; J. Posey Alford and wife Mary Elliot; John R. Alford Jr.; Lee Alford IV; and Robert D. Alford.

VIRGINIA

The first known Alford in this country was Richard Alford who was in James City, Virginia, in 1624. The AAFA state representative, W. Joseph Alford, lives just down the river in Hampton, VA. Virginia ranks 18th with an Alford population estimated at 425. There were six AAFA member families in Virginia at the end of October, and one holds the distinction of having contributed substantially more financially than any other member. A new member from Virginia is Capt. J. M. Pearigen, USN Ret. Dr. M. E. Alford has offered to help with Alford research.

Computer Fund Established

One of the subjects discussed extensively at the annual meeting in Houston was AAFA's computer operation. Many members have computers and are willing to assist in Association data management. The majority of these computers are MS-DOS or IBM compatible systems; however, the main Association computer is the one used by Gil Alford in Missouri, which he donated to AAFA. Unfortunately, it is not an MS-DOS or IBM compatible system and is considered obsolete in most computer circles. While it operates well at the present time, it is likely to expire well before the Association does. Furthermore, computer disks used on the Association computer are not compatible with those of other members and vice versa.

Robert L. Alford of Houston made a motion, which received a second and passed, that the Association establish a separate computer fund to which members may make donations. This fund is maintained outside the regular budget. Our goal is \$2500; as of the end of November, the fund contained \$235. Donations so far have come from Eleanor Alford, Gerald T. Alford, Landon Alford, and Sally Stoewer. Many thanks!

Jim Alford of Houston, our computer guru, is providing the specifications for the new system. When it's time for selection, the final decision will be made by the Board of Directors.

Needless to say, your donation to the computer fund will be greatly appreciated.

[Editor's note: This newsletter is produced on a Macintosh computer using PageMaker, a page layout program. It is printed on a Laser-Writer.]

Success Strikes Again!

Many of you know how the work underway by AAFA results in making family connections. Here's a story that points out the importance of each of you sending every bit of Alford data you have. It shows how if members are patient, they can expect to eventually learn more about their Alford ancestors.

Part One

In 1984, well before AAFA was started, Alicia Houston and Gil Alford were working on a project dealing with Alford families in Washington and Oregon. In the process they wrote to most of the Alford families in those states. One of the responses was from Thomas C. Alford of Althena, OR. He returned a worksheet showing his Alford ancestry to be Aaron Leon Alford, born 1913 TX, son of Thomas Alford TX, son of Zacharie from the "Southern States." The content of a letter Thomas C. wrote is pertinent so it is quoted below:

We just received your letter and are very interested in our roots. As a matter of fact, we just returned from Phoenix, Ariz. where my daughter lives. While there I came into contact with a Lee Alford. It was quite a surprise to me & my wife. We are in the cattle business in Ore. and I was looking for a ranch in Ariz. Looking in the Phoenix phone book I saw Alford Land & Livestock. This is the name of our company in Ore.

I had no idea who this person was, so I went by his office to talk to him (Lee). After talking about 15 minutes we came to realize that Lee was my dad's (Aaron) 1st cousin. His dad was named Walter.

I talked to Lee and told him about your letter & he is very interested in the Alford family. I am sending him a copy of what you sent me, so you will hear from Lee also. I have lived in Ore. for the last 20 years. but I was born and raised in

the Imperial Valley of California. If you have any more information please let us hear from you.

Part Two

In January 1989 Julius M. Alford, AAFA Treasurer, of McComb, MS, sent Gil a newspaper clipping from a local Mississippi paper. Part of the article follows:

ALFORD SETS UP SCHOLARSHIP FLAGSTAFF, Ariz—Lee Alford, the vice president and general manager of the Cavenham Forest Industries plant at Fernwood (MS), has established a scholarship at his alma mater for forestry students.

Julius sent Gil Lee Alford's local address in Bogalusa, LA. Most of the Bogalusa Alford families are Gil's closer cousins, but he had no contact there so he was anxious to get an active participant in the Alford work. He wrote a letter to Lee Alford explaining the association, offering help and asking for information on his family. After verifying with Julius that the AAFA was not another rip-off outfit, Lee joined the association in June. His worksheet showed his Alford ancestry to be Elmer Lee Alford 1905 TX, Walter Lee Alford 1879 TX, Zachary Taylor Alford 1850 AL.

It was apparent that the Lee Alford in Phoenix was none other than the Lee whom Thomas Alford had visited in 1984. The Zachary Taylor Alford on Lee's worksheet was the same as the Zacharie on Tom's.

Part Three

By April of this year so many descendants of Julius Alford were joining AAFA that it was difficult to keep track of them. It became apparent that a listing of the Alford descendants of

Julius, born 1747 in North Carolina, was needed. With the help of several members, particularly Jim Alford of Houston and D. L. Alford, Jr., a listing was prepared identifying over 400 Alford families. The family of James A. J. Alford who was born in Greene County, GA, and died in Titus County, TX, included a Zachariah Alford born about 1851 in Georgia. Efforts to learn more about his descendants, if any, had been fruitless.

In the third quarter of 1989 a large number of news releases were sent to local Texas papers. Articles for each county were unique to that county with some mention of the early Alford families of that county. Such an article went to *THE MART HERALD* in Mart, McLennan County, TX, a weekly paper with a circulation of 2,200.

D. L. Alford, Jr. received a letter on August 27, 1989, from Mildred Dulaney. The letter was as follows:

This week our local paper, the Mart Herald, had an article about the Alford Family gathering in which Zachary Taylor Alford who married Josephine Thornton was specifically mentioned. This family being a collateral line of mine, I thought you might be interested in the little I have.

The first item is a letter written by Zach's mother. The letter was written to my great grand parents. Enclosed is a photostatic copy of the original letter, a typed copy of it and a sheet identifying the persons named.

There are also three letters written by William Claudius (Claude) Morgan, a first cousin of Zack's. When the Morgans moved to Texas in the late 1860s, Claude wrote quite a number of letters to his friend Henry Johnson still back in

(Continued on p. 32)

Success Story, cont. from p. 31)

Alabama. The letters to Henry were saved and on a trip back to Alabama were shown to us. We were allowed to type copies of the letters, this being before the days of copying machines.

A brief outline of the Morgan-Alford connection is enclosed in hopes that it will make the relationships clear. The Alford children are listed as well as I have been able to determine them but I am sure they are not completely accurate, having only the mother's letter and census records to go by. Could you furnish me with an accurate list and a bit about them.? I would be very grateful if you can.

This James A. Alford family were in Troup County, Georgia in the 1840 and 1850 censuses, in 1860 in Ouachita County, Arkansas and in 1870 in Titus County, Texas. Zach Alford was listed twice in the 1860 census, with his family in Arkansas and with his Morgan grandparents in Chambers County, Alabama. Zach is buried in the Patrick Cemetery in McLennan County.

I hope this information will be of help to you and that you have a very successful meeting in Houston.

You should have figured by now that Zacharie, Zachary, Zachariah, and Zach are all the same person. Ms. Dulaney's letter permitted us to add to the 400+ list of descendants of Julius Alford a substantial fork headed by Zach Alford of Waco, Texas. Ms. Dulaney was sent a letter thanking her for her outstanding and generous contribution of information and providing her the information she requested. A copy of the package she sent was sent to Lee Alford in Bogalusa and to Tom Alford in Oregon.

So—you can see that it pays to send information, to publicize with specifics in local areas, and to be patient!

Membership Report

Membership Growth

D. L. Alford, Jr., AAFA Vice President for Texas, has been appointed to the AAFA Board of Directors. His primary role as a Director will be membership growth. This quarter we have added 58 new members!! The membership has doubled every year since the Association began—a fantastic record.

However, it is not time to relax and enjoy it. In a recent discussion with him on this subject, D.L. pointed out that he sees grass roots growth in two areas: family and city.

He is asking that each member family enlist at least one other member of their larger family during the next year. This can be done by giving them a gift membership or persuading them to join. He has set an example in this regard—18 of his family members (cousins, nephews, nieces, children and grandchildren) are current members! D. L. is quick to recognize that many others have also made significant strides in local family membership.

The other natural area of growth is within the community, town, or city. If members believe that the Association is worthwhile, and most of those present in the meeting in Houston certainly thought it was, then it is worth sharing with other Alford in your area. Most of your "neighbors" have not joined the Association simply because they do not know about it. Why don't you tell them? Show them this issue of the newsletter or purchase an extra copy just for them.

To double again in 1990 we must add new members at a rate of about 22 members per month. If every current member succeeds in recruiting a new member or giving a gift membership in 1990, then our numbers will double "easily."

If you need literature explaining the Association or application blanks, request them on a postcard sent to the AAFA mail box. Before handing these applications out, you might want to make an annotation on the application that you were the "recruiter."

If you would like to have a list of all members arranged by "Family," one is available for \$1.00 to cover the cost of copying and mailing. The list does not contain member addresses, so if you need a current membership list, that is also available for an additional \$1.00. In each future issue there will be a family report or biographical sketch on one of the ancestors identifying a family branch. If you request one of the lists from the Missouri office please specify the list you want.

Membership Graphs

Each newsletter will include a graph on membership, by state or family branch. (See the family branch graph in this issue on page 46.) These depict membership on a national scale. Family branches are described by identifying an early progenitor (not always the ultimate ancestor). As the Association continues to grow, there will be some splitting and combining of branches. This early progenitor is identified on the graph with his Family Branch Code, which is composed of the first three letters of his given name, the last three digits in the year of birth or supposed year of birth, plus an abbreviation of the state of birth. For example the most well-represented branch is that of Julius Alford, born 1717 in New Kent Co., VA. His Family Branch Code is JUL717VA. You will see "family" designations in other AAFA products, and it is this code that is used. In many cases a similar code is used to identify the specific Alford or Alford ancestor, and these are usually labeled just "reference."

Inquiries

With this issue of AAFA ACTION, we will begin publishing inquiries from members on their Alford ancestors or collateral lines (such as wives). Members may have an unlimited number of inquiries published. Those of you who have been members for a long time should consider asking for help on some of your troublesome problems again because we have so many new members that one of them may be able to help.

The format for the inquiries is as follows:
PERSON BEING RESEARCHED
 Newsletter #-Question # / Requestor Code and Member #
 Name and address of requestor

ESPY E. ALFORD
 7-1 / RRH#137
 Mrs. Ruby Alford Heard, Post Office Box 10144, Jackson MS 39286

"If anyone has information on Epsy E. Alford listed in the 1860 census of Walton Co., FL, I'd like to here from them. She was my grandfather's aunt, and we never knew if she had any children or not. She was Espy E.

NORRIS from GA; married David S. Alford in Troup Co., GA, and lived in Tallapoosa Co., AL, in 1850. My grandfther lived near them in 1853 but he was three years old at that time, having moved from Troup Co. with his parents. If you are a relative or just know about her, please write to me. I will gladly pay for your postage and any copies you might send to me from a Bible or family notes."

HARVEY ALFORD
 7-2 / WIN#188
 Winston B. Murray, Post Office Box 295, Richland Springs, TX 76871

He needs help with Harvey Alford who died May 20 1880. He and his wife, Mary, were the parents of James K. Alford, who was born 28 November 1845 in Jerseyville, Jersey Co., IL. Harvey's wife died 1 August 1849.

SARAH VIRGINIA ALFORD
 7-3 / JM3#087
 J. Mo. Kinabrew, Jr., 6178 General Haige Street, New Orleans LA 70124

He is looking for information on a

related family, that of his maternal grandfather, Thomas Jefferson POW-ELL. He was born 5 December 1861, probably in MS. He died 13 April 1899 in New Orleans and is buried in **McComb, Pike Co. MS. He married Sarah Virginia Alford on 20 December 1882. The Alford ancestry of Sarah V. Alford is well known.**

THOMAS J. ALFORD
 7-4 / JMP#259
 Jare M. Pearigen, 9603 Tinsmith Lane, Burke VA 22015

He is seeking information on his grandmother Elizabeth Sanders Alford, who was born 21 March 1850 in Gibson Co., TN. She was married first to Henry R. DICKSON and after his death, to Talton Evandrel PEARIGEN. Elizabeth's father was named Thomas J. Alford and her mother was Frances RICHARDSON. Thomas J. Alford was born in TN about 1826. He married second to Martha BRIGHTWELL. Thomas' mother might have been named Sarah and born in VA about 1780. Family group records are available on Talton Evandrel Pearigen / Elizabeth Sanders Alford and Thomas J. Alford / Frances Richardson for those who desire a copy. (Send large SASE and \$1.00 to cover cost of five copies.)

Staci Alford, Star Athlete

AAFA member #005, Col. Truman Alford of Illinois, reports that his brother Willie C. Alford, has a son Charles who lives in Baton Rouge. Charles has a 17 year old daughter, Staci, who is a fabulous athlete. As a pitcher on the Baton Rouge girls soft ball team she won numerous national awards. She graduated from high school this spring third in her class academically and was voted the prettiest girl. Each year Baton Rouge awards \$1,500.00 cash to the best all-around athlete— all sports. Staci won the \$1,500 award. This must have been

a shocker when the city had an all-state quarterback plus a 270-pound lineman who came in second to a 118-pound girl! Staci had schlorship offers from Northwestern (both in Chicago and in Natchitoches), Notre Dame, North Carolina, Texas, LSU and several other universities. Notre Dame made her the best offer, so she accepted theirs. After being there only two weeks she had already pitched three complete games for their team in a tournament. The first game she lost by one run but she won the other two games. She is enrolled in their school of dentistry.

**Happy 50th
 Wedding Anniversary
 to
 D. L. Alford, Jr.
 and
 Catherine (Guynes)
 Alford!**

**Married
 December 26, 1939**

Non-Alford Surname Exchange

In the previous issue we announced a program recommended by member Jack Kinabrew of New Orleans: the Non-Alford Surname Exchange. Since that time, Pam Thompson, Publications Editor, discovered by chance an indication of how this exchange might work. New member Benjamin Spratling wrote to her about publishing an article in *AAFA ACTION*. He also remembered having encountered her name before—they had both been in touch with a third genealogist, Ben recently and Pam a few years ago. All three were researching a James Perdue of Georgia. The third genealogist sent Ben some material Pam had given her on James Perdue!

This was more than a coincidence—since many of us have lines from the same geographical areas, there is a good likelihood that we share lines other than Alford. In addition, some of you may have lots of material on collateral lines that you would be willing to share. This exchange is an opportunity to expand your pedigree charts and fill in the blanks on those family group sheets! Don't forget to limit the names you submit to those on the Alford half of your pedigree chart.

As indicated in the previous issue, the Association does not plan to become involved with these surnames or the exchange of other surname information between members. To evaluate the success of the program, please let us know if this listing is helpful to you.

The AAFA member number of the person submitting the name is in parentheses; the member's name and address is listed below. If you share any of these ancestors, write to the member and offer to exchange data.

(MEMBER #) NAME SPOUSE IF KNOWN	BIRTH	DEATH	MARRIAGE
(181) BULLOCK, MILES GRAHAM, LEMINTHA	1819-GA	1866	1839
(181) BULLOCK, CLARKIE SLOCOMB, ALEX	1813-GA	1860	1832
(181) BULLOCK, CAROLINE WELCH, _____	1815-GA	1870	
(181) BULLOCK, JESSE FOIL, CAROLINE	1817-GA	1838-MS	1833
(181) BULLOCK, JESSE A. ALFORD, MARTHA J.	1841-GA	1893-MS	1864
(30) PRATER, HENRY W. PERDUE, CAROLINE	1824		1845-GA
(30) PRATER, JOHN ALLISON GRIFFITH, MARY ANN	1780-MD	1863-GA	1810
(30) PRATHER, ZACHARIAH ALLISON, RUTH		SC	1778-MD
(30) GRIFFITH, JOSEPH BOULWARE, MARY ANN	1757		
(30) PERDUE, JAMES HORSLEY, ELIZABETH	1783-MD	1862-GA	
(30) VOGEL, WILLIAM JAMES SANDERS, MARY ELIZABETH	1843-MS	1923-LA	1872-LA
(30) SANDERS, OLIVER VIDLER, MARY/MARJANER	1827-AR		1848-LA

#181 David A. Schultz
P. O. Box 547
Lucedale, MS 39452

#30 Pam Thompson
1017 Marilyn Drive
Mountain View, CA 94040

Welcome to
58
New Members
This Quarter!

New Member Lineages

We are continuing our revised format for publishing the lineages of new members. We hope you find this format useful in determining whether you share an ancestor with any of our new members.

This quarter two things are added. As before, the names of our new members are listed below in large bold print. The numbers preceding the names are their AAFA Member #'s and, new this quarter, an individual code shown between the member number and the member name. This code is extremely useful to Gil Alford because all his files, computer and otherwise, are keyed to it. Numbers printed before the names of the ancestors are the numbers on the members' pedigree charts.

The second new item is the "family branch code." Following the member's name is a code in parentheses that identifies the new member's major family branch—if we have "established" one. If we have not established a family branch for that member's Alford ancestors, then the parentheses contain two question marks.

If you can add information or make corrections, please do so. You can submit the information on plain paper or you can request a blank Alford Family Worksheet from AAFA. All additions and corrections will be published in this newsletter.

NOTE (repeated from last quarter for the benefit of all our new members): Lodwick Alford, born about 1710 in Virginia, is included in many members' lines that follow. Much is still to be learned about Lodwick. The family tradition that he died 1789 in Georgia is becoming weaker all the time, and so far not a shread of evidence has been found to support it. The Lodwick who wrote his will in 1792 did die about 1800, but it is not known if this was the same one who was born in 1710. Exactly which Lodwick was the father of several of those listed in the lineages is still not known.

Wives Susanna Hartley and Rebecca Ferrell have been listed. It is proven that Lodwick married a Susanna, but the Hartley has not been proven. Strong family tradition says he married a Rebecca Ferrell, but no proof to this claim has been found.

Membership # and Individ. Code / **Member's Name** / (Family Branch Code)

PED.#	ALFORD ANCESTOR	BIRTH DATE	BIRTH PLACE	DEATH DATE	DEATH PLACE	SPOUSE
#194 JA8 /	John Warren Alford					
1	JOHN WARREN	19231223	MS PIKE			TUCKER, DAWN (2)
2	JACOB ELIAS	18800128	MS COPI	19720222	MS PIKE	EGLOFF, JOSEPHINE
4	JAMES THOMAS	18400405	MS COPI	18940716	MS COPI	STEELE, JULIA C. (2)
8	JULIUS CAESAR	18081215	NC ROBE	18991015	MS COPI	CAMMACK, MARY JANE
16	JAMES	17641212	NC ROBE	1839	MS COPI	MCTYER, <u>CLARKY</u>
32	JACOB	17381212	VA NEWK	182607	NC ROBE	PACE, MARY
64	LODWICK	1710	VA NEWK	1800CA	NC	HARTLEY, SUSANNAH
128	JAMES	1687CA	VA		VA	

Kathleen

We did not have the above lineage for the last publication—or at least we thought we didn't. The application for membership did not mention any Alford ancestors and it was thought that the applicant was a known John Warren Alford in Georgia. As it happens this is the brother of our Treasurer, Julius M. Alford. He picked an application up at their recent family reunion.

#209 WLS / **William Louis Surovik, Jr.** / (JUL747NC)

3	FLORENCE INEZ	18930512	TX BURL			SUROVIK, WILLIAM L.
6	HALCUT	18541127	TX BURL	19280627	TX BURL	SCOTT, MARY JANE
12	RICHARD E.	18181215	GA MOR?	18870126		LEE, FRANCES ELIZ (2)
24	HALCUT	17880505	GA GREE	18580313	MS MADI	_____, HARRIETT C.
48	JULIUS C.	1747CA	NC ????	18020825	GA GREE	JACKSON, REBECCA
96	LODWICK	1710CA	VA	1800CA	NC	FERRELL, REBECCA
192	JAMES	1687CA	VA		VA	

Membership # and Indiv. Code / **Member's Name** / (Family Branch Code)

PED.#	ALFORD ANCESTOR	BIRTH DATE	BIRTH PLACE	DEATH DATE	DEATH PLACE	SPOUSE
#210 HRR / Haidee Alford Reeves / (JUL717VA)						
1	HAIDEE KATHLEEN	19011026	LA TERR			REEVES, HARRY R.
2	BAILEY MONROE	18750702	LA TANG	19320505	LA ORLE	BRUMFIELD, JENNIE
4	MARSHALL THOMAS	18390927	LA WASH	19040524	LA TANG	SELF, CHARITY ANN
8	JOHN SEABORN	18071011	LA WASH	18911115	LA WASH	BRUMFIELD, MARGARET
16	JACOB	17610815	NC BUT?	18240718	LA WASH	SEABORN, FRANCES (2)
32	JULIUS	171709	VA NEWK	177111	NC BUTE	_____, LUCY
64	JAMES	1687CA	VA		VA	

#211 REG / William Reginald Alford / (??)

1	WILLIAM REGINALD	19440407				_____, CAROL C.
2	JOHN SIDNEY	19210831	AL CHAM			_____, TERESA

#212 OCA / Oliver Carroll Alford / (RIC828AL)

1	OLIVER CARROLL	19400520	TX HARR			GEHRELS, SHIRLEY
2	O. C.	19150823	TX ANDE	19820107	TX HARR	WORTHAM, LUCILLE M.
4	JAMES EDWARD	18810824	TX SABI	19521226	TX HARR	MOORE, AGNES MARIE
8	REDIN	18590102	AL	19341228	TX ANDE	MOORE, MARY JANE (1)
16	RICHARD	1828CA	AL			_____, LOUISA

#213 EAA / Eulon Alfred Alford / (JUL717VA)

1	EULON ALFRED	19210914	LA TANG			FELDER, YVONNE
2	BAILEY MONROE	18750702	LA TANG	19320505	LA ORLE	BRUMFIELD, JENNIE
4	MARSHALL THOMAS	18390927	LA WASH	19040524	LA TANG	SELF, CHARITY ANN
8	JOHN SEABORN	18071011	LA WASH	18911115	LA WASH	BRUMFIELD, MARGARET
16	JACOB	17610815	NC BUT?	18240718	LA WASH	SEABORN, FRANCES (2)
32	JULIUS	171709	VA NEWK	177111	NC BUTE	_____, LUCY
64	JAMES	1687CA	VA		VA	

#214 GHA / George Harold Alford / (HAY780GA)

1	GEORGE HAROLD	19170107	TX BOWI			SMITH, IRENE
2	GEORGE ALBERT	18940901	TX LAMA	19610110	TX HARN	MARKLEY, ONA MAE
4	ROBERT HENRY	18560401	AR UNIO	19241020	TX BOWI	HARMS, HELEN M.
8	JOHN H.	1818CA	GA BURK			DAVIS, MARTHA A.
16	HAYWOOD	1780CA	GA	18540324	AR UNIO	_____, ELIZABETH

#215 JOG / Joe Gerald Alford / (??)

1	JOE GERALD	19330531	TX PARK			BOHON, BETTY JUNE
2	CLARENCE LEE	19010925	TX HOOD	19860822	TX PARK	BAKER, RUTH CAROLINE
4	CLARENCE MOSS	18660609	TX TARR	19481016	TX PARK	PEVELER, LULU LEE
8	E. L.	1830CA	IL MOR?	1900	TX TARR	BELLTATI, FRANCESCA

Membership # and Indiv. Code / **Member's Name** / (Family Branch Code)

PED.#	ALFORD ANCESTOR	BIRTH DATE	BIRTH PLACE	DEATH DATE	DEATH PLACE	SPOUSE
#216 PSY / Patsy Alford Stratton / (JUL747NC)						
1	PATSY ANN	19330513	TX			STRATTON, RICHARD
2	RICHARD ERWIN	18860812	TX	19530116		MIEARS, ERA (3)
4	HALCUT	18541127	TX BURL	19280627	TX BURL	SCOTT, MARY JANE
8	RICHARD E.	18181215	GA MOR?	18870216		LEE, FRANCES ELIZ (2)
16	HALCUT	17880505	GA GREE	18580313	MS MADI	_____, HARRIETT C.
32	JULIUS	1747CA	NC ????	18200825	GA GREE	JACKSON, REBECCA
64	LODWICK	1710CA	VA	1800CA	NC	FERRELL, REBECCA
128	JAMES	1687CA	VA		VA	
#217 IPA / Irvin P. Alford / (THO585EN)						
1	IRVIN PETER	19310910	MN WATO			WHITE, VIRGINIA E.
2	WALLIS JAMES	18810801	NY FRAN	19451212	MN MART	HOGUE, STELLA BENTLY
4	LESLIE	1855CA	NY	1886		CHESSBROUGH, ALMINA
8	RANSOM CONSTANTI.	18180718	VT ??	1870>	IL ??	_____, MARY C.
16	ASHLEY OWEN	17700222	VT FRAN	18470314	NY ??	BAKER, ELIZABETH
32	BENEDICT	17160829	CT HART			OWEN, REBECCA (2)
64	BENEDICT	16880427	CT HART	17640215		WILSON, ABIGAIL
128	JEREMIAH	16551224	CT HART	17090606		HOSKINS, JANE
256	BENEDICT	1615CA	ENGLAND	16830423	CT HART	NEWTON, JANE
512	THOMAS	1575-85	ENGLAND	1636<	ENGLAND	_____, ELIZABETH (1)
1024	JOHN	1549CA	ENGLAND		ENGLAND	GIBBS, F.
2048	ALEXANDER	1520CA	ENGLAND		ENGLAND	_____, AGNES
4096	JOHN	1475CA	ENGLAND		ENGLAND	
#218 JR4 / John Richard Alford / (??)						
1	JOHN RICHARD	19530804	JAPAN			KESLER, MALYNDA ANN
2	ROY A.	19111216	AL GENE			BUCK, MARJORIE
4	JOHN RICHARD	1890?	AL GENE	1925?	AL DALE	WARD, BESSIE JENETTE
8	JOHN RICHARD					
#219 BDB / Barbara Denton Brassell / (??)						
A*	CYNTHIA HOLFORD	18190101	TN			OFFICER, WILLIAM A.
B*	JOHN ?HOLFORD?					_____, SARAH
*Pedigree numbers or relationship are not known.						
#220 FAS / Faye Alford Swan / (JUL717VA)						
1	FAYE	19380405	LA WASH			SWAN, PAT
2	BERCHEL L.	19061216	LA WASH			BURCH, ORA MAE
4	WILEY BANTON	18860710	LA WASH	19760223	LA WASH	MILLER, EMMA R.
8	JEPHTHA MARTIN	18620722	LA WASH	19480526	LA WASH	PURVIS, FANNY O. (1)
16	JOHN SEABORN	18071011	LA WASH	18911115	LA WASH	BRUMFIELD, MARGARET
32	JACOB	17610815	NC BUTE	18240718	LA WASH	SEABORN, FRANCES (2)
64	JULIUS	171709	VA NEWK	177711	NC BUTE	_____, LUCY
128	JAMES	1687CA	VA			

Membership # and Indiv. Code / **Member's Name** / (Family Branch Code)

PED.#	ALFORD ANCESTOR	BIRTH DATE	BIRTH PLACE	DEATH DATE	DEATH PLACE	SPOUSE
#221 CAN / Charles Alford Norvell / (JAM741NC)						
3	ANGIE	18840314	AL CHAM	19690408	TX	NORVELL, _____
6	JAMES W.	185406	AL			_____, JANIE E.
12	JOHN ROGERS	18100804	GA	18811110	AL CHAM	BEALL, AMELIA S.
24	KINCHIN	17791028	NC	181501	GA	WOOTEN, ASENATH D
48	JAMES	17410520	NC/VA	18121112	GA HANC	BOYKIN, LURANER W
96	LODWICK	1710CA	VA NEWK	1800CA	NC	HARTLEY, SUSANNAH
192	JAMES	1687CA	VA		VA	
#222 KBC / Kathrynne Bone Crews / (JUL747NC)						
51	MARY ERASMUS	1802/06	GA	185306	GA	NORSWORTHY, FRED (1)
102	LODWICK	17750202	NC	18570722	GA TROU	JACKSON, JUDITH
204	JULIUS C.	1747CA	NC ????	18200825	GA GREE	JACKSON, REBECCA
408	LODWICK	1710CA	NC ????	1800CA	NC	
816	JAMES	1687CA	NC ????			
#223 BTY / Betty Alford Davis / (JUL717VA)						
1	BETTY LYDIA	19081109	LA TANG			DAVIS, DARYL
2	MURRAY LUTHER	1873	LA	1944		SPRING, RUFINA P.(1)
4	MARSHALL THOMAS	18390927	LA WASH	19040524	LA TANG	SELF, CHARITY ANN
8	JOHN SEABORN	18071011	LA WASH	18911115	LA WASH	BRUMFIELD, MARGARET
16	JACOB	17610815	NC BUT?	18240718	LA WASH	SEABORN, FRANCES (2)
32	JULIUS	171709	VA NEWK	177111	NC BUTE	_____, LUCY
64	JAMES	1687CA	VA		VA	
#224 MLH / Mary Lee Hodnett / (JUL747NC)						
1	PAUL JULIUS	19000916	KS CHER	19530822	TX TARR	CHENEY, MARY LEE (3)
2	JULIUS S.	188003	TX HARN			SMITH, SUSAN ODELITE
4	ERASMUS L.	1841	TX HARN	1901>	TX HARN	WILLIAMS, MARY
8	LODWICK PIERCE	18120112	GA GREE	18960607	TX HARN	SHERRILL, MARTHA E A
16	LODWICK C.	17750202	NC FRAN	18570722	GA TROP	JACKSON, JUDITH
32	JULIUS C.	1747CA	NC	18200825	GA GREE	JACKSON, REBECCA
64	LODWICK	1710CA	VA	1800CA	NC	FERRELL, REBECCA ??
128	JAMES	1687CA	VA		VA	
#225 VHA / Victor Harold Alford / (JUL717VA)						
1	VICTOR HAROLD	19601217	GA BEN			LEWIS, BARBARA JO
2	HOLLIS HAROLD	19290102	MS PIKE			MCMILLAN, ETHEL
4	HOLLIS VICTOR	18911018	MS PIKE	19680515	MS PIKE	FORTINBERRY, SARA
8	JULIUS C.	18550118	MS PIKE	19370410	MS PIKE	LEWIS, CELIA ANN
16	WARREN JACKSON	18190912	MS PIKE	18991112	MS PIKE	SMITH, MARTHA P.
32	EDWIN BARKSDALE	17921225	NC CUM?	18780310	MS PIKE	SEABORN, FRANCES (2)
64	JACOB	17610815	NC BUT?	18240718	LA WASH	_____, LUCY
128	JULIUS	171709	VA NEWK	177111	NC BUTE	
256	JAMES	1687CA	VA			

Membership # and Indiv. Code / **Member's Name** / (Family Branch Code)

PED.#	ALFORD ANCESTOR	BIRTH DATE	BIRTH PLACE	DEATH DATE	DEATH PLACE	SPOUSE
#226 HH2 /	Hollis Harold Alford / (JUL717VA)					
1	HOLLIS HAROLD	19290102		MS PIKE		LEWIS, BARBARA JO
2	HOLLIS VICTOR	18911018	MS PIKE	19680515	MS PIKE	MCMILLAN, ETHEL
4	JULIUS C.	18550118	MS PIKE	19370410	MS PIKE	FORTINBERRY, SARA
8	WARREN JACKSON	18190912	MS PIKE	18991112	MS PIKE	LEWIS, CELIA ANN
16	EDWIN BARKSDALE	17921225	NC CUM?	18780310	MS PIKE	SMITH, MARTHA P.
32	JACOB	17610815	NC BUT?	18240718	LA WASH	SEABORN, FRANCES (2)
64	JULIUS	171709	VA NEWK	177111	NC BUTE	_____, LUCY
128	JAMES	1687CA	VA			

#227 HG2 / **Harold Glen Alford** / (HAY780GA)

1	HAROLD GLEN	19221214	AR HEMP			MAYFIELD, FRED A
2	ENOS HANSEL	18970208	AR HEMP	19781101	AR OUAC	ELMORE, NANNIE VERNA
4	BURGESS STANFORD	18600415	AR UNIO	19471202	LA WEBS	MARTIN, MARGARET ANN
8	CHRISTOFER COLUM.	1841CA	LA OUAC	18620906	MS LEE	JESTER, TABITHA
16	STANFORD L.	1820CA	GA BURK			SMITH, NANCY (1)
32	HAYWOOD	1780CA	GA	18450324	AR UNIO	_____, ELIZABETH

#228 GWO / **Glenda Anita W. Owen** / (JOH787SC)

23	MARY ADELINE	18360809	GA /FL	19201225	FL ??	ROBERTS, JONATHAN K.
46	HANSFORD	1812	SC			MANN, JINCY
92	JOHN	1787CA	SC SPAR			

#229 AAC / **Annette Alford Castro** / (JAM741NC)

1	MARGARET ANNETTE	19331105	GA MORG			CASTRO, CAMILO L.
2	JOHN EDWARD	19061016	GA PUTN			HARPER, GEROGIA B.
4	GEORGE CLAUDE	18800816	GA PUTN	19420420	GA MORG	ALLISTON, ADDIE F.
8	JOHN FRANKLIN	1836CA	GA	18850822	GA PUTN	PASCHAL, VIRGINIA F.
16	KINCHEN	18120509	GA NC	18910726		ALVERA, CYNTHIA
32	KINCHEN	17791028	NC	181501	GA	WOOTEN, ASENATH D.
64	JAMES	17410520	NC/VA	18121112	GA HANC	BOYKIN, LURANER W.
128	LODWICK	1710CA	VA	1800CA	NC	FERRELL, REBECCA
256	JAMES	1687CA	VA		VA	

#230 MAX / **Max Ray Alford** / (??)

1	MAX RAY	19420201	TX HOPK			BROOKSHIRE, EUNICE E
2	RAY LEWIS	19061117		19771124	TX HOPK	BELL, FOY
4	WILLIAM LEWIS	1878CA	MS			KEITH, MINNIE

Membership # and Indiv. Code / **Member's Name** / (Family Branch Code)

PED.#	ALFORD ANCESTOR	BIRTH DATE	BIRTH PLACE	DEATH DATE	DEATH PLACE	SPOUSE
#231 EDG / Edgar Gerald Alford / (JUL747NC)						
1	EDGAR GERALD	19271010	TX			TILOTTA, MARY L.
2	EDGAR DURWOOD	19021005	TX HOUS	19350206	TX HOUS	HENDERSON, LIZZIE
4	CHARLES MONTG'RY	18600622	MS RANK		MS	TONY, MARY ANGELINE
8	FRANCIS A.	1829CA	MS WILK		TX	WILLIAMS, AMARINTHA
16	HALCUT	17880505	GA GREE	18580313	MS MADI	_____, HARRIETT C.
32	JULIUS C.	1747CA	NC ????	18200825	GA GREE	JACKSON, REBECCA
64	LODWICK	1710CA	VA	1800CA	NC	
128	JAMES	1687CA	VA			
#232 MAM / Mary Justine A. Monroe / (JUL747NC)						
1	MARY JUSTINE	19160113	TX BURL			MONROE, JAMES W.
2	RICHARD ERWIN	18860812	TX BURL	19530116		GRIFFIN, SARAH
4	HALCUT	18541127	TX BURL	19280627	TX BURL	SCOTT, MARY JANE
8	RICHARD E.	18181215	GA MOR?	18870216		LEE, FRANCES ELIZ (2)
16	HALCUT	17880505	GA GREE	18580313	MS MADI	_____, HARRIETT C.
32	JULIUS	1747CA	NC ????	18200825	GA GREE	JACKSON, REBECCA
64	LODWICK	1710CA	VA	1800CA	NC	FERRELL, REBECCA
128	JAMES	1687CA	VA		VA	
#233 VAG / Vesta Alford Giddings / (JUL717VA)						
1	EDNA VESTA	19050402	LA TANG			GIDDINGS, H. D.
2	MURRAY LUTHER	1873	LA	1944		SPRING, RUFINA P.(1)
4	MARSHALL THOMAS	18390927	LA WASH	19040524	LA TANG	SELF, CHARITY ANN
8	JOHN SEABORN	18071011	LA WASH	18911115	LA WASH	BRUMFIELD, MARGARET
16	JACOB	17610815	NC BUT?	18240718	LA WASH	SEABORN, FRANCES (2)
32	JULIUS	171709	VA NEWK	177111	NC BUTE	_____, LUCY
64	JAMES	1687CA	VA		VA	
#234 DOT / Dorothy L. Allford / (JUL717VA)						
1	DOROTHY L.	1925	LA			
2	MURRAY LUTHER	1873	LA	1944		SINGER, ANNIE (2)
4	MARSHALL THOMAS	18390927	LA WASH	19040524	LA TANG	SELF, CHARITY ANN
8	JOHN SEABORN	18071011	LA WASH	18911115	LA WASH	BRUMFIELD, MARGARET
16	JACOB	17610815	NC BUT?	18240718	LA WASH	SEABORN, FRANCES (2)
32	JULIUS	171709	VA NEWK	177111	NC BUTE	_____, LUCY
64	JAMES	1687CA	VA		VA	
#235 JO / Josephine Alford Carrigan / (JUL717VA)						
1	JOSEPHINE LOUISE	19060722	LA TERR			CARRIGAN, MARION D.
2	MURRAY LUTHER	1873	LA	1944		SPRING, RUFINA P.(1)
4	MARSHALL THOMAS	18390927	LA WASH	19040524	LA TANG	SELF, CHARITY ANN
8	JOHN SEABORN	18071011	LA WASH	18911115	LA WASH	BRUMFIELD, MARGARET
16	JACOB	17610815	NC BUT?	18240718	LA WASH	SEABORN, FRANCES (2)
32	JULIUS	171709	VA NI.WK	177111	NC BUTE	_____, LUCY
64	JAMES	1687CA	VA		VA	

Membership # and Indiv. Code / Member's Name / (Family Branch Code)

PED.#	ALFORD ANCESTOR	BIRTH DATE	BIRTH PLACE	DEATH DATE	DEATH PLACE	SPOUSE
#236 MRA / Murray L. Alford, Jr. / (JUL717VA)						
1	MURRAY LUTHER	1919	LA LAFO			_____, MARY RUTH
2	MURRAY LUTHER	1873	LA	1944		SPRING, RUFINA P.(1)
4	MARSHALL THOMAS	18390927	LA WASH	19040524	LA TANG	SELF, CHARITY ANN
8	JOHN SEABORN	18071011	LA WASH	18911115	LA WASH	BRUMFIELD, MARGARET
16	JACOB	17610815	NC BUT?	18240718	LA WASH	SEABORN, FRANCES (2)
32	JULIUS	171709	VA NEWK	177111	NC BUTE	_____, LUCY
64	JAMES	1687CA	VA		VA	
#237 EBI / Ebbie Preston Alford / (??)						
1	EBBIE PRESTON	19500827				DYSON, MARTHA LOUISE
2	EBBIE C.	19201202	SC MARI			LONG, LOUISE P.
4	JOSEPH PRESTON	1876CA	SC HERR	19370624		MISHOE, ISABELLA
8	ARNOLD B.	18440109	SC HERR	19170809	SC HERR	FLOYD, MARTHA
16	DUKE W.	1811CA	NC			JOHNSON, FEBARIAH
32	JOHN B.	1795CA				CARROLL, DOLLY
#238 VLA / V. Louise Alford / (JUL747NC)						
1	VIRGINIA LOUISE	19310921	TX			
2	EDGAR DURWOOD	19021005	TX HOUS	19350206	TX HOUS	HENDERSON, LIZZIE
4	CHARLES MONTG'RY	18600622	MS RANK		MS	TONY, MARY ANGELINE
8	FRANCIS A.	1829CA	MS WILK		TX	WILLIAMS, AMARINTHA
16	HALCUT	17880505	GA GREE	18580313	MS MADI	_____, HARRIETT C.
32	JULIUS C.	1747CA	NC ????	18200825	GA GREE	JACKSON, REBECCA
64	LODWICK	1710CA	VA	1800CA	NC	
128	JAMES	1687CA	VA			
#239 JNA / Johnney Nolen Alford / (JUL747NC)						
1	JOHNEY NOLEN	19600415	MS HIND			
2	ROYAL CHADWICK	19190922	MS LEAK			UNDERWOOD, BERTELE
4	WILBURN WHITFIELD	18750905	AL TALP	19620521	MS	HOLLINGSWORTH, VIRG.
8	COLUMBUS WASH.	18500112	GA TROU	19361129	MS	GLOVER, MARTHA MARY.
16	JAMES FLOYD	1817CA	GA GREE			ELLIS, SARAH J.
32	ZADDOCK	1787CA	GA GREE	18231215	GA MORG	SHERRILL, PERRENE
64	JULIUS C.	1747CA	NC ????	18200825	GA GREE	JACKSON, REBECCA
128	LODWICK	1710CA	VA	1800CA	NC	FERRELL, REBECCA
256	JAMES	1687CA	VA		VA	
#240 WMM / Mary A. Mischer / (JUL747NC)						
1	MARY ANGELINE	19220704	TX HOUS			MISCHER, WALTER M.
2	EDGAR DURWOOD	19021005	TX HOUS	19350206	TX HOUS	HENDERSON, LIZZIE
4	CHARLES MONTG'RY	18600622	MS RANK		MS	TONY, MARY ANGELINE
8	FRANCIS A.	1829CA	MS WILK		TX	WILLIAMS, AMARINTHA
16	HALCUT	17880505	GA GREE	18580313	MS MADI	_____, HARRIETT C.
32	JULIUS C.	1747CA	NC ????	18200825	GA GREE	JACKSON, REBECCA
64	LODWICK	1710CA	VA	1800CA	NC	
128	JAMES	1687CA	VA			

Membership # and Indiv. Code / **Member's Name** / (Family Branch Code)

PED.#	ALFORD ANCESTOR	BIRTH DATE	BIRTH PLACE	DEATH DATE	DEATH PLACE	SPOUSE
#241 WRN / John Warner Alford / (JUL717VA)						
1	JOHN WARNER	19380426	MS PIKE			SWAYZE, KAY
2	JOHN WARNER	19070714	MS PIKE	19770328		CHANDLER, INEZ IONE
4	JAMES BARNEY	18701129	MS PIKE	19561004	MS PIKE	WARNER, ETTIE J.
8	BARNABAS SEABORN	18451224	MS PIKE	19280206	MS PIKE	NORMAN, ANNA REBECCA
16	SEABORN JOHN	18071011	LA WASH	18840204	MS PIKE	FELDER, MARY CATH.
32	JACOB	17610815	NC BUT?	18240718	LA WASH	SEABORN, FRANCES (2)
64	JULIUS	171709	VA NEWK	177111	NC BUTE	_____, LUCY
128	JAMES	1687CA	VA		VA	

#242 KMA / Kenneth M. Alford / (??)

1	KENNETH M.	19370217	TX			_____, DARLENE
2	MILACE HARDESTY	18950729	TX BOWI			WOLFE, GEORGIA

#243 MT / Mary Tolle / (??)

3GGM	ANNIE	1808CA	NC WILK			FYFFE, JOHN
4GGF	WILLIAM	1774E				CANNON, BETSY
5GGF	WILLIAM	17511130	NC ??			WARREN, MARY

*Pedigree numbers are not known—only general relationship.

#244 MBA / Bruce Alford / (JUL747NC)

1	MICHAEL BRUCE	19660117	TX			
2	DANIEL LEE	19400921	TX BURL			COLLERAIN, MARY A.
4	DANIEL LEE	19150124	TX BURL			GUYNES, CATHERINE G.
8	DANIEL LEE	18761212	TX BURL	19640915	TX BURL	KLUKAN, ANNIE F.
16	HALCUT	18541127	TX BURL	19280627	TX BURL	SCOTT, MARY JANE
32	RICHARD E.	18181215	GA MOR?	18870126		LEE, FRANCES ELIZ (2)
64	HALCUT	17880505	GA GREE	18580313	MS MADI	_____, HARRIETT C.
128	JULIUS C.	1747CA	NC ????	18200825	GA GREE	JACKSON, REBECCA
256	LODWICK	1710CA	VA	1800CA	NC	FERRELL, REBECCA
512	JAMES	1687CA	VA		VA	

#245 LOU / James Louis Alford, Jr. / (JAC738VA)

1	JAMES LOUIS	MS				
2	JAMES LOUIS	19181129	MS PIKE			RUTLEDGE, ANNA K.
4	JACOB ELIAS	18880128	MS COPI	19720222	MS PIKE	EGLOFF, JOSEPHINE (2)
8	JAMES THOMAS	18400415	MS COPI	18940716	MS COPI	STEELE, JULIA C. (2)
16	JULIUS C.	18081215	NC ROBE	18991015	MS COPI	CAMACK, MARY-JANE
32	JAMES	1764	NC ROBE	1839	MS COPI	MCTYER, CLARKY
64	JACOB	17381212	VA NEWK	182607	NC ROBE	PACE, MARY
128	LODWICK	1710CA	VA NEWK	1800CA	NC	HARTLEY, SUSANNAH
256	JAMES	1687CA	VA		VA	

Kawai

Membership # and Indiv. Code / Member's Name / (Family Branch Code)

PED.#	ALFORD ANCESTOR	BIRTH DATE	BIRTH PLACE	DEATH DATE	DEATH PLACE	SPOUSE
#246 EAM / Ella Langdon Alford / (JAM741NC)						
1	ELLA LANGDON	19311221	TX			
2	JOHN ROGERS	18850201	TX	19600308	TX	LANDON, SUSAN
4	EGBERT BENSON	18580414	AL CHAM	19330826	TX RUSK	OVERTON, ELLA A.
8	JOHN ROGERS	18100804	GA	18811110	AL CHAM	BEALL, AMELIA S.
16	KINCHEN	17991028	NC	181501	GA	WOOTEN, ASENATH D.
32	JAMES	17410520	NC/VA	18121112	GA HANC	BOYKIN, LURANER W.
64	LODWICK	1710CA	VA	1800CA	NC	HARTLEY, SUSANNAH
128	JAMES	1687CA	VA		VA	
#247 EHJ / J. Evetts Haley, Jr. / (JUL747NC)						
9	CORA LYNN	18410104	MS MADI	19240322	TX BEXA	HALEY, JAMES W.
18	HALCUT	17880505	GA GREE	18580313	MS MADI	_____, HARRIETT C.
36	JULIUS C.	1747CA	NC ????	18200825	GA GREE	JACKSON, REBECCA
72	LODWICK	1710CA	VA	1800CA	NC	FERRELL, REBECCA
144	JAMES	1687CA	VA		VA	
#248 ERN / Ernestine L. Jackson / (??)						
5	SARAH ELIZABETH	1866CA		1946	TX	LLOYD, GEORGE W.
10	HARRISON	18450427	AL MONR	1875CA	TX	ROBERTS, THANNY
20	WILLIAM B.	1808CA	SC			SNOWDEN, SARAH ANN
#249 JBS / Jeanne B. Singleton / (JUL717VA)						
3	AUDELE	1910	LA WASH	19890825	LA EABR	BATEMAN, CARL (1)
6	ALONZO SEABORN	18910710	LA WASH	19640516	LA WASH	MORRIS, FLORENCE
12	JEPHTHA MARTIN	18620722	LA WASH	19480526	LA WASH	PURVIS, FANNY O. (1)
24	JOHN SEABORN	18071011	LA WASH	18911115	LA WASH	BRUMFIELD, MARGARET
48	JACOB	17610815	NC BUT?	18240718	LA WASH	SEABORN, FRANCES (2)
96	JULIUS	171709	VA NEWK	177711	NC BUTE	_____, LUCY
192	JAMES	1687CA	VA		VA	
#250 GA / Gerald T. Alford / (JOH844SC)						
1	GERALD THEMAS	19501230	SC WILL			MAXWELL, DEBRA ANN
2	JOHN HENRY	19260726	SC FLOR			HOWARD, MARY ADELINE
4	ELLIE PARKER	18920812	SC MARI	19680713	SC WILL	HYMAN, ALICE
8	JOHN WILLIAM	1844CA	SC MARI	19240607	SC FLOR	PARKER, ELIZABETH (3)
16	_____	1815E	SC ????			HARRELL, ELIZABETH
#251 JOC / Joyce Alford Vorman / (JUL717VA)						
1	JOYCE	19260425	LA			VORMAN, EDWARD J.
2	STEVE A.	18941218	LA TANG			POWELL, JOYCE
4	ARTHUR COLLEY	18691023	LA	19371209	LA	HAYDEN, MARY
8	MARSHALL THOMAS	18390927	LA WASH	19040524	LA TANG	SELF, CHARITY ANN
16	JOHN SEABORN	18071011	LA WASH	18911115	LA WASH	BRUMFIELD, MARGARET
32	JACOB	17610815	NC BUT?	18240718	LA WASH	SEABORN, FRANCES (2)
64	JULIUS	171709	VA NEWK	177711	NC BUTE	_____. LUCY
128	JAMES	1687CA	VA		VA	

Membership # and Indiv. Code / **Member's Name** / (Family Branch Code)

PED.#	ALFORD ANCESTOR	BIRTH DATE	BIRTH PLACE	DEATH DATE	DEATH PLACE	SPOUSE
-------	-----------------	------------	-------------	------------	-------------	--------

#252 BRO / **Brownie Alford McElmoyl** / (JUL717VA)

If information is received a lineage will be published later.

#253 GGM / **George G. Miller** / (JOH696MD)

3	CORRINE RUTH	19081113	KS ALLE			MILLER, GEORGE EDW.
6	HENRY NEWTON	18820805	KS ALLE			HIBBARD, CORA
12	ANTHONY WAYNE	18511110	IN DAVI	1917		EDWARDS, RACHEL
24	WAYNE	18210421	IN DAVI	18740924	KS ALLE	PERKINS, MARY
48	JAMES	17911221	VA WYT?	18610809	IN DAVI	BAKER, HANNAH
96	JOHN	1763CA	VA WYT?		KY/MO	HOGUE, ELEANOR
192	THOMAS	1725CA	VA FRE?	180611CA	VA WYTH	FIELD, ELIZABETH
384	JOHN	1696CA	MD/ENG	1748	VA FRED	DAWSON, MARY

#254 JP2 / **J. P. Alford** / (JOH844SC)

1	JOHN PHILIP	19520721	SC WILL			SHERIDAN, LINDA L. (2)
2	JOHN HENRY	19260726	SC FLOR			HOWARD, MARY ADELINE
4	ELLIE PARKER	18920812	SC MARI	19680713	SC WILL	HYMAN, ALICE
8	JOHN WILLIAM	1844CA	SC MARI	19240607	SC FLOR	PARKER, ELIZABETH (3)
16	_____	1815E	SC ????			HARRELL, ELIZABETH

#255 PCM / **Paul C. Murphy** / (JUL717VA)

3	PEARL STEVEANNA	18850726	LA TANG	19691216	LA CALC	MURPHY, DUNCAN A.
6	MARSHALL THOMAS	18390927	LA WASH	19040524	LA TANG	SELF, CHARITY ANN
12	JOHN SEABORN	18071011	LA WASH	18911115	LA WASH	BRUMFIELD, MARGARET
24	JACOB	17610815	NC BUT?	18240718	LA WASH	SEABORN, FRANCES (2)
48	JULIUS	171709	VA NEWK	177711	NC BUTE	_____, LUCY
96	JAMES	1687CA	VA		VA	

#256 RW2 / **Robert Warren Alford** / (LOD740NC)

1	ROBERT WARREN	19470323	TX TARR			KIRK, JUDITH ANN
2	ROBERT BURNS	19220316	TX			McFADIN, GLADYS M.
4	JAMES BURNS	18900128	TN	19370504	TX PALO	KNOWLES, HATTIE G.
8	CHARLES A.	18671018	TN	19420814	TX PALO	BURNES, SARAH A.
16	JAMES M.	183209	TN			CHILDRESS, MARTHA F.
32	ISAAC W.	18051114	NC FRAN	18591123	TN	EDMISTON, MARY P.
64	BAILEY	17810715	NC	1836-40	TN	WILLIAMS, NANCY
128	ISAAC	1760E	NC			ALFORD, MARY
129	MARY	1760E	NC			ALFORD, ISAAC
256	JULIUS	171709	VA NEWK	177711	NC BUTE	_____, LUCY
258	LODWICK	1740E			NC	
512	JAMES	1687CA	VA		VA	
516	LODWICK	1710CA	VA	1800CA	NC	
1032	JAMES	1687CA	VA		VA	

Membership # and Indiv. Code / Member's Name / (Family Branch Code)

PED.#	ALFORD ANCESTOR	BIRTH DATE	BIRTH PLACE	DEATH DATE	DEATH PLACE	SPOUSE
#257 RW3 / Richard Wayne Alford / (LOD740NC)						
1	RICHARD WAYNE	19440629	TX PALO			CRAIN, RUBY CAROL
2	CHARLES KNOWLES	19180411	TX PALO	19860501	TX PARK	HARRIS, MAXINE
4	JAMES BURNS	18900128	TN	19370504	TX PALO	KNOWLES, HATTIE G.
8	CHARLES A.	18671018	TN	19420814	TX PALO	BURNES, SARAH A.
16	JAMES M.	183209	TN			CHILDRESS, MARTHA F.
32	ISAAC W.	18051114	NC FRAN	18591123	TN	EDMISTON, MARY P.
64	BAILEY	17810715	NC	1836-40	TN	WILLIAMS, NANCY
128	ISAAC	1760E	NC			ALFORD, MARY
129	MARY	1760E	NC			ALFORD, ISAAC
256	JULIUS	171709	VA NEWK	177711	NC BUTE	_____, LUCY
258	LODWICK	1740E	NC			
512	JAMES	1687CA	VA		VA	
516	LODWICK	1710CA	VA	1800CA	NC	
1032	JAMES	1687CA	VA		VA	
#258 KIS / Kim I. Savage / (??)						
21	MARY ANN [JANE]	18521126	TX	19211008	TX TERR	GREEN, JOHN
42	HATCH	1815CA	NC			LONGLEY, MARTHA E.
84	ISAAC	1751CA	NC			
#259 JMP / J. M. Pearigen / (??)						
5	ELIZABETH	18500321	TN GIBS			PEARIGEN, TALTON (2)
10	THOMAS J.	1826CA	TN			RICHARDSON, FRANCES
20	WILLIAM	1780CA				
#260 EAB / Earsel K. Alford Bender / (??)						
1	EARSEL K.					BENDER, DON (2)
2	WILLIAM LACE	18871206	MS ????	19691112		COPELAND, LILLIE M.
#261 DLB / Elizabeth Lynn Bryan / JUL717VA)						
21	JANE	18250322	MS PIKE	18950801		TYNES, TYRE JENNINGS
42	EDWIN BARKSDALE	17921125	NC CUM?	18780310	MS PIKE	SMITH, MARTHA P.
84	JACOB	17610815	NC BUT?	18240718	LA WASH	SEABORN, FRANCES (2)
168	JULIUS	171709	VA NEWK	177111	NC BUTE	_____, LUCY
336	JAMES	1687CA	VA		VA	
#262 TWR / Thomas Wayne Robinson / (ISH74?NC)						
3GGM	ELIZABETH ANN	1809CA	GA		TX ???	ROUTON, MATTHEW
4GGF	BRITTAIN WASH.	17810204	NC	18490210	GA PIKE	BRASSELL, BARSHEBA
GGF	ISHAM	1749E	NC			_____, ANNA
6GGF	LODWICK	1710CA	VA	1800CA	NC	
7GGF	JAMES	1687CA	VA		VA	

Membership # and Indiv. Code / **Member's Name** / (Family Branch Code)

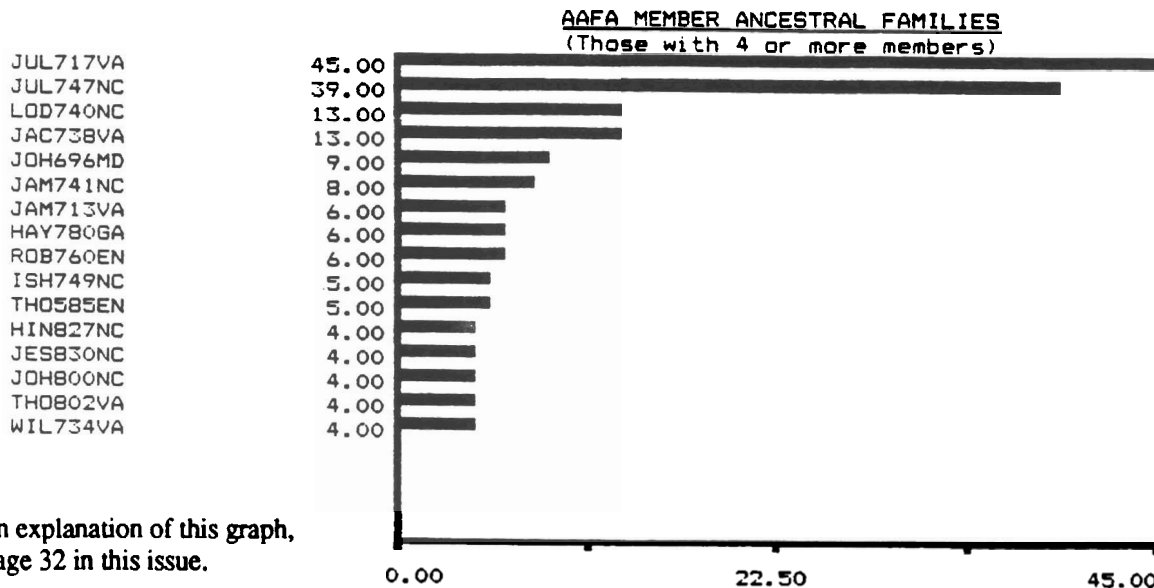
PED.#	ALFORD ANCESTOR	BIRTH DATE	BIRTH PLACE	DEATH DATE	DEATH PLACE	SPOUSE
#263 BBS / Benjamin B. Spratling, III / (JUL747NC)						
35	JULIET WARREN	18240116	GA NEWT	18790829	GA TROU	COX, ALBERT EWING
70	JULIUS CAESAR	17990510	GA GREE	18630101	AL MONT	COOK ELIZA ASHLEY
140	LODWICK C.	17750202	NC	18570722	GA TROU	JACKSON, JUDITH
280	JULIUS C.	1747CA	NC ????	18200825	GA GREE	JACKSON, REBECCA
560	LODWICK	1710CA	VA	1800CA	NC	FERRELL, REBECCA
1120	JAMES	1687CA	VA		VA	

#264 DLH / Diana Lee Hunt / (THO802VA)						
45	MATILDA	1831CA	TN/MO	1862CA		MANSFIELD, MOSES
90	THOMAS	18020513	VA WYTH	18921129	OR LINN	KUPP, KESIA (1)

#265 JMC / Joan A. McNair / (JAC738VA)						
9	CLARKIE ANN	1837E	NC ROBE	18891122	TX OVER	MCAIR, DOUGLAS P.
18	WILEY	18010621	NC ROBE	18781122	AL HOUS	FULMORE, CLARISSA R.
36	SION	17631212	NC ROBE	18320627	NC ROB?	MCTYER, CLARKY
72	JACOB	17381212	VA NEWK	182607	NC ROBE	PACE, MARY
144	LODWICK	1710CA	VA	1800CA	NC	HARTLEY, SUSANNAH
288	JAMES	1687CA	VA		VA	

#266 RL6 / R. L. Alford / (THO802VA)						
1	RICHARD LINDSAY	19260507				MONAHAN, MARILYN
2	HERBERT LINDSAY	18940706	OR JACK			CROWSON, BERNICE W.
4	MOSES LAFAYETTE	18570427	OR LINN	19440310	OR	APLEGATE, RACHAEL L
8	ALBERT L.	18330504	MO CHAR	19211030	OR JACK	BRINKER, CATHERINE K
16	THOMAS	18020513	VA WYTH	18921129	OR LINN	KUPP, KESIA (1)

Ancestral Family Graph



For an explanation of this graph, see page 32 in this issue.

Welcome New AAFA Members

MBR NAME	ADDRESS	CITY	STATE	ULTIMATE ANCESTOR	EVENT DATE & PLACE
209	COL. W. L. SUROVIK, JR.	307 N. HILL	CALDWELL	TX 77836	JAMES B 1687CA VA
210	MRS. HAIDEE REEVES	POST OFFICE BOX 298	ALBANY	LA 70711	JAMES B 1687CA VA
211	MR. REG ALFORD	4900 E. 98TH AVENUE	TAMPA	FL 33617	JOHN SIDNEY B 1821 AL
212	MR. CARROLL ALFORD	6814 SPINDLE	HOUSTON	TX 77086	RICHARD B 1830E
213	MR. EULON A. ALFORD	611 W. COLORADO	HAMMOND	LA 70404	JAMES B 1687CA VA
214	MR. GEORGE HAROLD ALFORD	2404 OAKS DRIVE	PASADENA	TX 77502	ROBERT H. B 18560401 AR
215	MR. JOE G. ALFORD	2608 GLENWOOD	DENTON	TX 76201	E. L. B 1830 IL ??
216	MRS. PATSY A. STRATTON	14854 WEIL PLACE	HOUSTON	TX 77060	JAMES B 1687CA VA
217	MR. IRVIN ALFORD	POST OFFICE BOX 328	HOLTS SUMMIT	MO 65043	LESLIE B 185? NY ??
218	MR. JOHN RICHARD ALFORD	400 OXFORD, #5	HOUSTON	TX 77007	JOHN RICHARD B 1860E AL ??
219	MRS. BARBARA D. BRASSELL	3700 MEADOWWOOD CIRCLE	GUNTERSVILLE	AL 35976	JOHN HOLFORD B 1775<
220	MRS. FAYE ALFORD SWAN	400 HILLSIDE DRIVE	STARKVILLE	MS 39759	JAMES B 1687CA VA
221	MR. CHARLES A. NORVELL	POST OFFICE BOX 158	HENDERSON	TX 75653	JAMES B 1687CA VA
222	MRS. KATHRYNE BONE CREWS	ROUTE 2, BOX 356	POTTSBORO	TX 75076	WILLIAM B ENGLAND
223	MRS. BETTY ALFORD DAVIS	3221 TANGLEWOOD TRAIL	FORT WORTH	TX 76109	JAMES B 1687CA VA
224	DR. MARY LEE HODNETT	1600 BLUEBONNET TRAIL	ARLINGTON	TX 76013	JAMES B 1687CA VA
225	MR. VICTOR H. ALFORD	304 NOTRE DAME	ALTAMONTE SPRINGS	FL 32714	JAMES B 1687CA VA
226	MR. H. HAROLD ALFORD	2231 W LAKE BRANTELY DR	LONGWOOD	FL 32779	JAMES B 1687CA VA
227	MR. HAROLD GLEN ALFORD	705 BRYN MAWR DRIVE	LONGVIEW	TX 75604	HAYWOOD B 1780CA GA / NC
228	MRS. GLENDA WALKER OWEN	POST OFFICE BOX 89	OLUSTEE	FL 32072	JOHN B 1787 SC
229	MRS. ANNETTE A. CASTRO	2332 WENTWORTH DRIVE	MONTGOMERY	AL 36106	WM. KINCHEN B 1810 ?? NC ??
230	MR. MAX RAY ALFORD	427 WHEATRIDGE	MESQUITE	TX 75150	WILLIAM LEWIS B 1878??? MS / GA
231	MR. GERALD ALFORD	1519 BUTLERCREST	HOUSTON	TX 77080	JAMES B 1687CA VA
232	MRS. MARY JUSTINE MONROE	ROUTE 4, BOX 11	YORKTOWN	TX 78164	JAMES B 1687CA VA
233	MRS. VESTA ALFORD GIDDINGS	115 LAZY LANE	BAYTOWN	TX 77520	JAMES B 1687CA VA
234	DR. DOROTHY ALLFORD	11239 SAN METEO STREET	LOMA LINDA	CA 92354	JAMES B 1687CA VA
235	MRS. JOSEPHINE A. CARRIGAN	5393 SPRINGDALE AVENUE	PLEASANTON	CA 94566	JAMES B 1687CA VA
236	MR. MURRAY L. ALFORD, JR.	119 W. 124TH STREET	CUT OFF	LA 70345	JAMES B 1687CA VA
237	MR. EBBIE ALFORD	321 BENHAM STREET	PALATKA	FL 32177	JOHN B. B 1795 SC??
238	MISS V. LOUISE ALFORD	7575 KATY FREEWAY #26	HOUSTON	TX 77024	JAMES B 1687CA VA
239	MR. JOHNNY NOLEN ALFORD	453 GREENLEAF TRAIL	MADISON	MS 39110	JAMES B 1687CA VA
240	MRS. MARY ALFORD MISCHER	418 PINEWOLD	HOUSTON	TX 77056	JAMES B 1687CA VA
241	MR. JOHN WARNER ALFORD, JR.	BOX 158	UNIVERSITY	MS 38677	JAMES B 1687CA VA
242	MR. KENNETH M. ALFORD	1709 PARKRIDGE TERRACE	ARLINGTON	TX 76012	MILACE
243	MRS. MARY TOLLE	HC 74, BOX 600	VANCEBURG	KY 41179	WILLIAM ??? B 1751

MBR NAME	ADDRESS	CITY	STATE	ULTIMATE ANCESTOR	EVENT DATE & PLACE	
244	MR. BRUCE ALFORD	POST OFFICE BOX 275	CALDWELL	TX 77836	JAMES	B 1687CA VA
245	MR. JAMES LOUIS ALFORD, JR.	POST OFFICE BOX 1908	MC COMB	MS 39648	JAMES	B 1687CA VA
246	MS. ELLA LANGDON ALFORD	GENERAL DELIVERY	BRIXEY	MO 65618	JAMES	B 1687CA VA
247	MR. JAMES EVETTS HALEY, JR.	POST OFFICE BOX 2515	MIDLAND	TX 79702	JAMES	B 1687CA VA
248	MRS. ERNESTINE L. JACKSON	31327 ALICE LANE	TOMBALL	TX 77375	WILLIAM	B 1808 SC
249	MRS. JEANNE B. SINGLETON	5655 MAPLETON DRIVE	GREENWELL SPRINGS	LA 70739	JAMES	B 1687CA VA
250	MR. GERALD T. ALFORD	340 HILLSIDE COURT	BURLESON	TX 76028	JOHN WILLIAM	B 1844CA SC
251	MRS. JOYCE ALFORD VORMAN	RURAL ROUTE 2, BOX 139AA	GREAT BARRINGTON	MA 01230	JAMES	B 1687CA VA
252	MRS. BROWNIE A. MCELMOYL	2019 W LEMON TR PL #1130	CHANDLER	AZ 85524	JAMES	B 1687CA VA
253	MR. GEORGE G. MILLER	8938 W. FAIRMONT AVENUE	PHOENIX	AZ 85037	JOHN	B 1696E MD ??
254	MR. JOHN P. ALFORD	27 WREN LANE	NEW BRAUNFELS	TX 78132	JOHN WILLIAM	B 1844CA SC MARI
255	MR. PAUL C. MURPHY	POST OFFICE BOX 2602	BAYTOWN	TX 77522	JAMES	B 1687CA VA
256	MR. ROBERT WARREN ALFORD	411 SOUTH DAVIS DRIVE	ARLINGTON	TX 76013	JAMES	B 1687CA VA
257	MR. RICHARD WAYNE ALFORD	3832 HUNTWICK DRIVE	FORT WORTH	TX 76123	JAMES	B 1687CA VA
258	MS. KIM SAVAGE	9025 LAKE DRIVE #107	CLARENDON HILLS	IL 60514	ISAAC	B 1751CA NC
259	CAPT. JARE M. PEARIGEN	9603 TINSMITH LANE	BURKE	VA 22015	WILLIAM	B 1780CA ????
260	MRS. EARSEL BENDER	4122 FIRST PLACE	MERIDIAN	MS 39305	WILLIAM LACE	B 18871206 MS NESH
261	DR. LYNN BRYAN	701 ANTLER DRIVE	CASPER	WY 82601	JULIUS	B 171709 VA
262	REV. T. WAYNE ROBINSON	308 N. CANTON	MEXIA	TX 76667	ISHAM	B 1749E NC
263	MR. BENJAMIN B. SPRATLING III	2320 CAHABA ROAD	BIRMINGHAM	AL 35223	JULIUS	B 1747CA NC
264	MRS. DIANA HUNT	P. O. BOX 444	FORT JONES	CA 96032	THOMAS	B 1802 VA
265	MISS JOAN A. MCNAIR	6501 W. OCEAN FRONT	NEWPORT BEACH	CA 92663	JACOB	B 1738 VA
266	MR. RICHARD L. ALFORD	POST OFFICE BOX 176	CARMEN	ID 83462	THOMAS	B 1802 VA